



Welcome to

our **World**

COMPANY PROFILE



KABBANI  
CONSTRUCTION  
GROUP®

Integrated Engineering  
& Contracting Solutions

**Kabbani Construction Group**



## Table of Content

---

06	IKK Company
08	KCG Company
10	Global Presence
12	KCG QHSEFM & TQM
14	Total Quality Management
18	KCG Business Divisions
72	Integrated Engineering & Contracting Solutions
102	KCG Regional Presence
110	Projects Highlights - KSA
148	Projects Highlights - Global
164	Contacts

NEOM is a bold and audacious dream of a new future, an accelerator of human progress that will embody the future of innovation in business, livability, and sustainability. KCG has been contributing to Neom projects including The Line, Trojena, Sindalah Island, Oxagon, and NIA.

Picture: Oxagon, KSA Neom | KSA

TRUST THE BLUE

Isam Khairi Kabbani

Your Partner since 1968

Established in 1968, Isam Khairi Kabbani Group (IKK) is a leading Saudi family business and a pioneer in the construction industry. Our extensive portfolio encompasses every aspect of ambitious projects, including foundational infrastructure, building and construction materials, integrated contracting and engineering solutions, maintenance, building envelope and facade solutions, and refined interior solutions. Operating across multiple countries worldwide, we excel through mastering key business segments: Manufacturing, Trading, Contracting, Engineering, and Maintenance. This broad expertise enables us to address the diverse needs of the construction industry and beyond, including the food industry.



Blue is our identity, from where we began and continue...

The endless blue hues of Jeddah's skies and shores, where our story began, and our founder's deeply rooted passion for the ocean and sailing have always inspired us to push beyond the boundaries of possibilities, playing an impactful role in the Saudi economy and the region. It shaped the group's vision and mission to continue to drive IKK Group forward on its journey of growth and excellence and to be the first choice of our stakeholders.

IKK Vision & Mission

Vision is maintaining our leading position in the construction industry and beyond by building the future of the communities we serve.

Mission is to provide innovative solutions tailored to meet construction market needs, serving the Kingdom of Saudi Arabia, the MENA Region, and key markets worldwide through our manufacturing, trading, and contracting capabilities.

IKK Values

The Blue Commitment

- Excellence** Standing as a benchmark for quality and distinction.
- Integrity** Accomplishing what we promised to achieve.
- Innovation** Embracing challenges as opportunities for business advancements.
- Impact** Striving to create a better present and future for all.
- Respect** Earning your trust with consideration, collaboration, and appreciation.

IKK Management



Mr. Isam Kabbani  
IKK Group Honorary Chairman



Mr. Hassan AlKabbani  
IKK Group Chairman

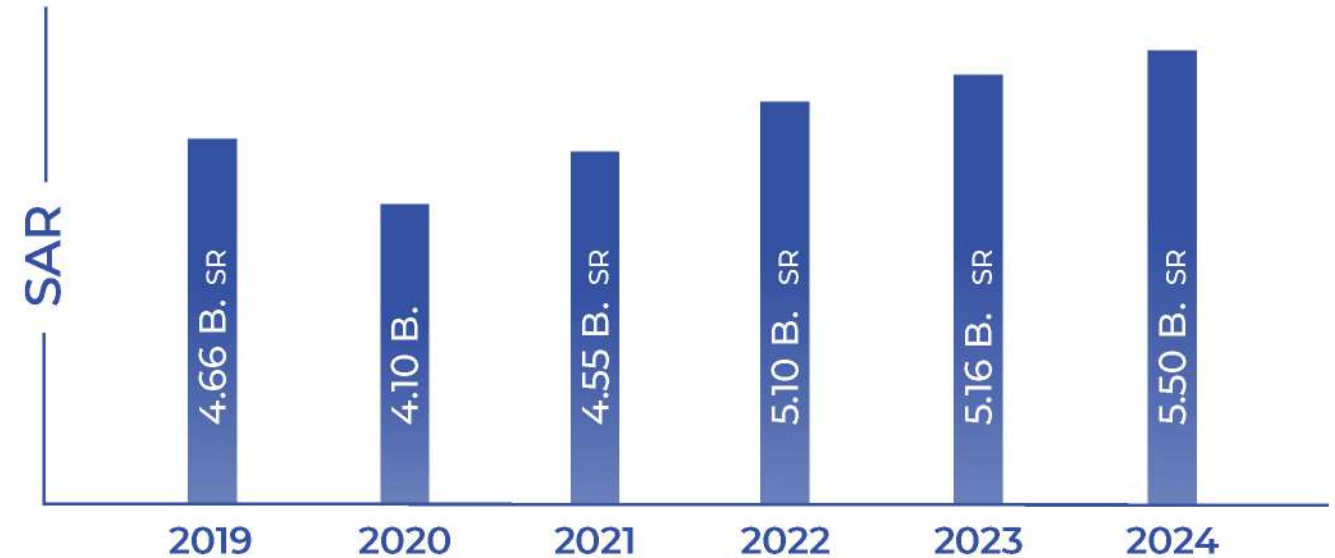


Mr. Amr AlKabbani  
IKK Group CEO

IKK Facts & Figures



IKK Revenues



## Kabbani Construction Group

### KCG

IKK's contracting arm consists of 24 engineering & construction companies providing specialized engineering and construction services integrated to deliver advanced turnkey solutions for residential and commercial sectors throughout the region. We drive the development of specialized contracting and set benchmarks of high-quality standards. KCG leverages its experienced and highly qualified workforce over the years to deliver cutting-edge services.

### 1977

Since its inception in the 70s, KCG has grown to be a leading specialized contractor in the GCC & MENA regions. KCG is driven by innovation to provide integrated specialized construction services with advanced engineering solutions to provide full & tailored contracting services. We are offering Turnkey Services for commercial and residential sectors, Enabling & Road Works, Infrastructure Construction & Development, Tunneling (Pipe Jacking and Segmental), Oil and Gas Special Services, Urban Development, Airfield Construction Services, Fit-Out, Structure Protective Coating & Insulation Systems, Archaeological Investigation, Heritage Services (Consultancy, Conservation, and Restoration), Structural Condition Assessment, Structural Strengthening & Rehabilitation, Building Information Modeling (BIM) Services & Reality Capture, and Solar Energy Solutions.

### Our Vision

KCG's vision is to be the leading provider of comprehensive solutions, leveraging smart construction innovation to strengthen competitiveness in our core business areas while positively impacting society and the environment through advanced, sustainable solutions. We aim to craft the future of construction through exceptional quality and digitalization.

### Our Mission

Our mission is to guarantee the most satisfying project execution by being the resolution developer. Driven by quality, trust, and accountability, we deliver customer-centric solutions with advanced problem-solving approaches that inspire and ensure excellence in every project.



KCG CEO  
Eng. Hatem Salaheldin

### KCG

#### Business Philosophy

As we continue to grow, we adapt to global construction trends while upholding our position as one of the leading contractors in MENA. Our projects meet the local construction requirements, ensuring seamless integration with the international market's advanced standards.

Sustainability drives our construction philosophy as we build efficient, durable structures while minimizing our carbon footprint for a greener future.

Our employees are our most valuable asset. We foster autonomy and growth through training, ensuring a skilled workforce is equipped to deliver innovative solutions.

We understand that each client has unique needs. Our solutions are customized to meet specific requirements, ensuring optimal results for every project. We empower our clients by providing knowledge and expertise to make informed decisions.

At KCG, we believe in building strong, lasting relationships with our stakeholders, including shareholders, employees, customers, and suppliers. Our commitment to integrity, transparency, & excellence ensures we meet and exceed our fundamental responsibilities.



	 Saudi Arabia		KABBANI CONSTRUCTION GROUP®
	 Emirates		KABBANI CONSTRUCTION GROUP® 
	 Egypt		KABBANI CONSTRUCTION GROUP®  
	 Lebanon		
	 Oman		KABBANI CONSTRUCTION GROUP®
	 Bahrain		KABBANI CONSTRUCTION GROUP®
	 Kuwait		KABBANI CONSTRUCTION GROUP®

# KCG QHSEFM and TQM Safety First —Always.

## Health, Safety & Environment



At Kabbani Construction Group (KCG), safety, quality, and sustainability are not just priorities—they are foundational principles embedded in every aspect of our operations. Our integrated Quality, Health, Safety, Environment, and Facilities Management (QHSEFM) system is built upon the Total Quality Management (TQM) philosophy, ensuring that excellence is achieved through continuous improvement, accountability, and innovation.

KCG’s ultimate goal is to prevent harm by ensuring safe working conditions and processes for all employees, contractors, visitors, and the public. We are fully committed to complying with all applicable governmental health, safety, environmental, and welfare legislation. Our “Safety First” culture is reinforced through detailed procedures, toolbox talks, safety committees, electronic communications, and visible signage across all job site and facilities.

Health, Safety, and Environment (HSE) is a core pillar of our QHSEFM system. By integrating HSE into every stage of our project lifecycle—from planning to execution—we foster a culture of safety and sustainability. No corporate objective takes precedence over the health and safety of our people. Every activity must be executed safely, without compromise.



# Total Quality Management

## A Culture of Continuous Improvement



Since 2007, KCG has implemented a robust TQM approach that drives excellence across all divisions. Our integrated management system is certified to ISO 9001:2015, ISO 14001:2015, and ISO 45001:2018 standards, covering operations across Saudi Arabia, Egypt, Qatar, UAE, Oman, Bahrain, and Kuwait. This system ensures that quality is not just a goal but a mindset—embedded in planning, design, execution, and delivery.

TQM empowers our teams to take ownership of quality at every level. We actively seek feedback, identify areas for enhancement, and deploy innovative solutions to optimize processes and exceed client expectations.



# Quality Assurance and Quality Control (QA/QC)

## Precision, Accountability, and Results

Our Quality Assurance and Quality Control (QA/QC) department plays a vital role in maintaining the highest standards across all projects. This is achieved through:

- **Stringent Inspection Procedures:** Comprehensive checks at every project stage.
- **Experienced Personnel:** Skilled QA/QC professionals with deep technical expertise.
- **Advanced Technology:** Cutting-edge tools for accurate and efficient quality control.
- **Continuous Improvement:** Regular audits and reviews to refine processes and elevate performance.

This unwavering commitment to quality and safety has earned KCG a reputation for delivering projects that meet and exceed international standards.

### Sustainability and Global Alignment

As a proud member of the U.S. Green Building Council since April 2021, KCG is aligned with global efforts to design and operate buildings that regenerate and sustain the health and vitality of all life. Our vision is to contribute to a built environment that supports future generations.



Business Divisions

Construction Services & Maintenance	Enabling Works, Shoring, Dewatering, & Piling	Waterproofing & Thermal Insulation	Airports, Roads & Infrastructure	Concrete Precast Fabrication & Erection	Advanced 3D Printing & Revolutionary Building Solutions	Electromechanical Contracting Company	Renewable Energy Systems	Fit-Out & Interior Contracting	Exhibitions & Museums Solutions	Specialized Architectural Finishes	Protective Coating Solutions, Insulation, Scaffolding, & Rock Theming
Jointless Flooring Contracting	Airfield Construction & Maintenance	Post-Tensioning Systems	Advanced Infrastructure Management Solutions	Concrete Repair & Soil Improvement	Archaeological Field Management Solutions	Marine Works & Infrastructure	Cathodic Protection, & Heat Treatment	Industrial Construction, Repair & Maintenance	Micro-Tunneling & Tunneling Technologies	Soil Stabilizing Techniques	Waterproofing, Damp Proofing & Firestopping

Facts & Figures

**12,000+ Employees Globally**

**450 + Running / Active Projects**  
(Engineering – Specialized – EPC & Turnkey)  
6.9 + B. SR Projects Value


**45+ Years of Experience**

**5000+ Equipment, 1900+ Vehicles.**  
KCG owns vehicles and equipment worth 700 M SAR.

Kabban Construction Group (KCG) is the contracting vehicle of the IKK Group, one of the largest and oldest business institutions in Saudi Arabia.

Revenues





As part of its never-ending efforts to provide the finest services possible, KCG has 24 construction and engineering companies offering a wide range of EPC solutions & specialized construction activities in integration with digital applications, maximizing value engineering. KCG has contributed to the construction of mega projects, including Shura Golf Villas, Coastal Village Beach Club, & Ummahat Al Shaykh Islands Hotel.

Picture: The Red Sea Global | KSA

# COSMA

## Construction Services & Maintenance

COSMA (Construction & Maintenance Services) was originally established in 1987 to serve Saudi Aramco's specialized construction services and preventive maintenance needs for the community and industrial sectors. COSMA's services have expanded to many major prestigious clients for plants and refineries, including SASREF, SAMREF, LUBEREF, SEC, the Royal Commission of Jubail & Yanbu, and many more.

- 1- General Civil Work
- 2- Facility Management
- 3- Housing Construction
- 4- Building & Community Maintenance
- 5- Infrastructure Works
- 6- Mechanical Construction & Maintenance
- 7- Industrial Tank Construction
- 8- Steel Structure Upgrades



# KFS

Enabling Works, Shoring, Dewatering, & Piling



KFS was established in 2011 (formerly known as BMC Shoring and Dewatering) to meet the growing demand for specialized enabling works in the construction industry. Over the years, KFS has expanded its expertise, resources, and client base, becoming a trusted name. Today, KFS offers comprehensive solutions in enabling works, shoring, piling, and dewatering, providing essential groundwork support for projects across the construction sector.

## 1- Enabling Works

- Cut & Fill
- Subgrade Preparation

## 2- Shoring

- Berlin Shoring Walls
- Sheet Pile Walls
- Bracings
- Ground and Rock Anchors
- Soil Nailing

## 3- Piling

- Diaphragm Walls
- Contiguous Pile Walls
- Secant Pile Walls
- Bored Piles
- CFA Piles

## 4- Dewatering

- Deep Well System
- Well Point Dewatering Systems



## BMC

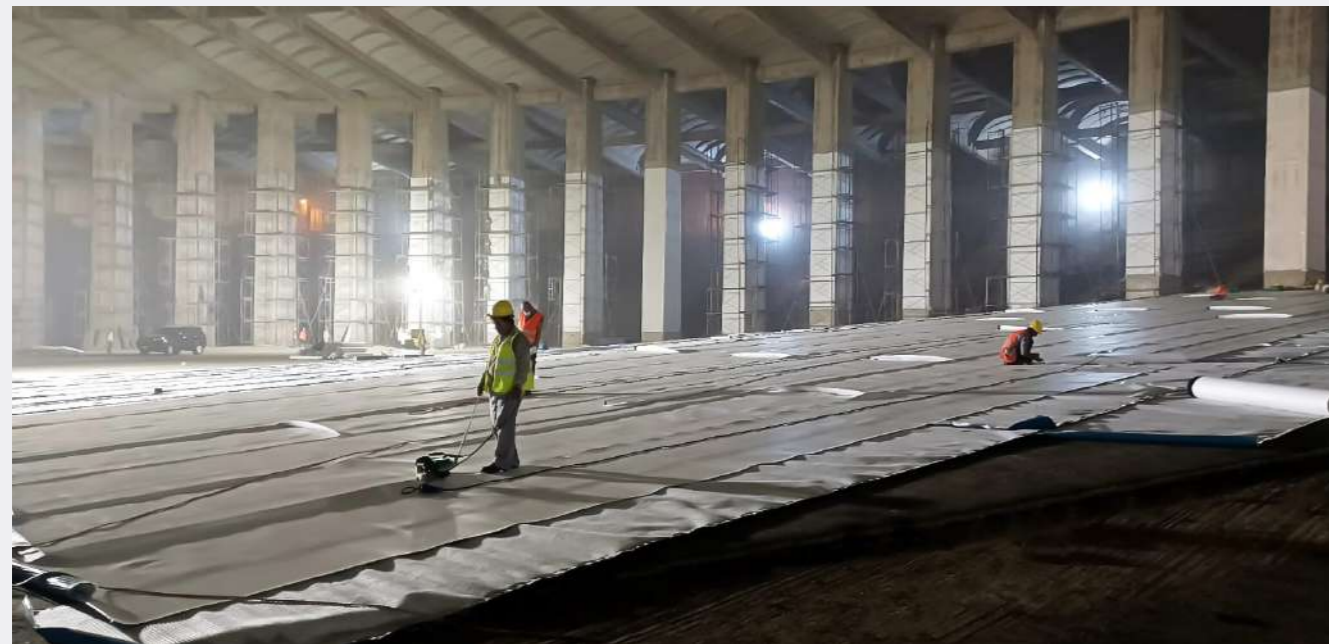
### Waterproofing & Thermal Insulation



KCG's first company is BMC (Waterproofing, Roofing, Thermal Insulation, Lining, EIFS Facades, and Shoring & De-Watering). BMC has completed nearly 100 million square meters of complete waterproofing and damp-proofing systems, larger than the entire city of Dhahran, since its inception in 1980 and over the last four decades. BMC has since created a specialized market for single-ply membrane systems to address the growing demand for superior waterproofing protection in modern buildings.

BMC is the world's largest non-franchise single-ply membrane roofing contractor and distributor. BMC is constantly looking for innovative solutions and high-quality products by collaborating with reputable material producers in the waterproofing and building chemicals fields, gaining their trust, and becoming their recommended applicator for their product line. BMC is continuously developing new services and business lines to its range of services, enhancing its market leadership position.

- 1- Substructures Waterproofing
- 2- Roofing & thermal insulation systems
- 3- Waterproofing for Wet Areas
- 4- Lining Systems for Water Containment Structures
- 5- Environmental Solutions (HDPE Geo-Synthetic Liner Systems)



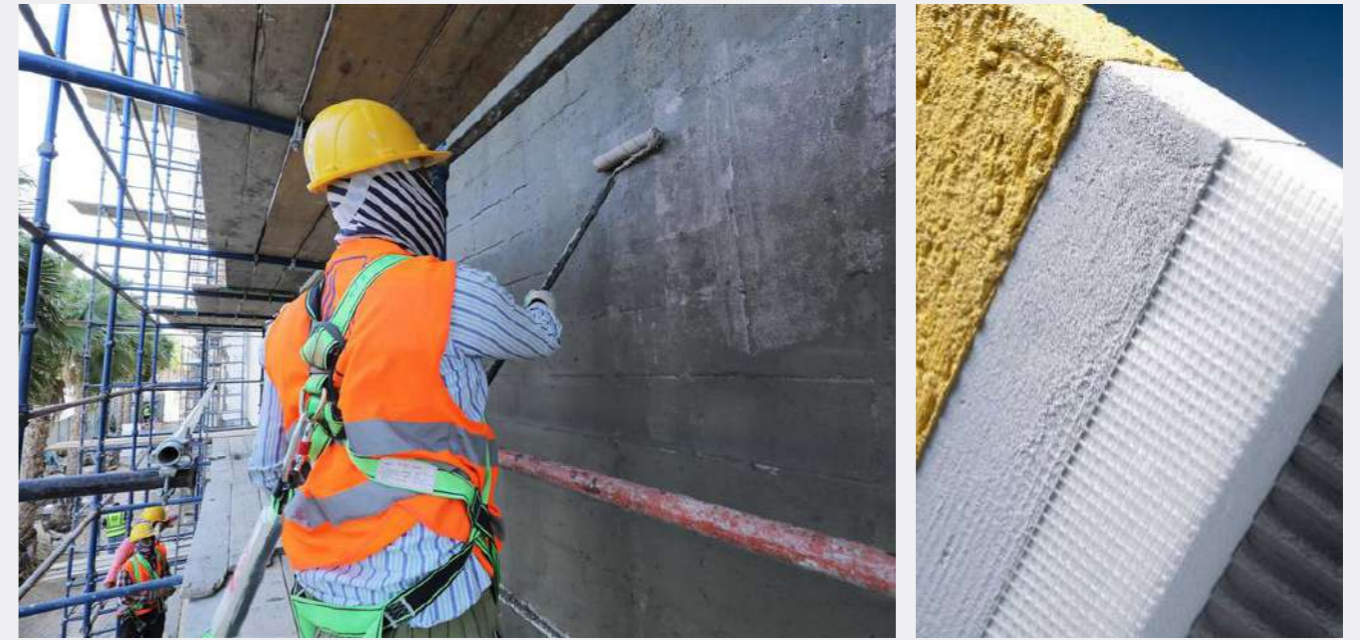
## BMC EIFS Unit

Exterior Insulation & Finishing Systems



BMC's new unit, EIFS, is dedicated to the supply and installation of Exterior Insulation and Finishing Systems (EIFS). EIFS is a multi-layer finishing system comprised of thermal insulation boards and renders that provide continuous insulation by design, giving architects design flexibility and aesthetics while helping to meet new energy codes.

- 1- Exterior Insulation and Finishing Systems (EIFS)
- 2- Lightweight Façade System
- 3- Exterior Decorative Façade Elements
- 4- External Decorative Renders
- 5- Soffit Insulation Systems
- 6- Acoustic Ceiling Renders



# SPD

Airports, Roads & Infrastructure

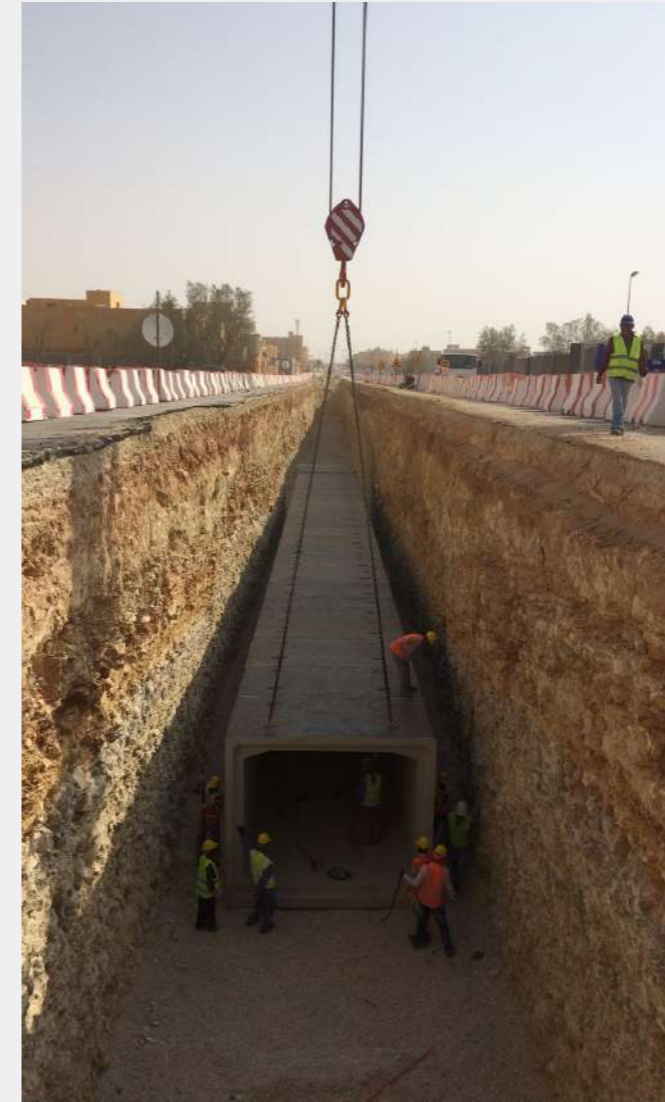


SPD (Special Projects Division) is in charge of various infrastructure projects. It works on airport runways, road construction, utilities, telecommunications, landscape, and hardscape projects for the public and private sectors.

SPD is committed to quality and customer service. It completes each project on schedule and within budget while maintaining the highest levels of professionalism, excellent quality, and utmost concern for the safety of its personnel and the environment.

- 1- Airports & Roads
- 2- Earthworks
- 3- Underground Utilities
- 4- Telecommunication

OUR SERVICES



# INSHAA

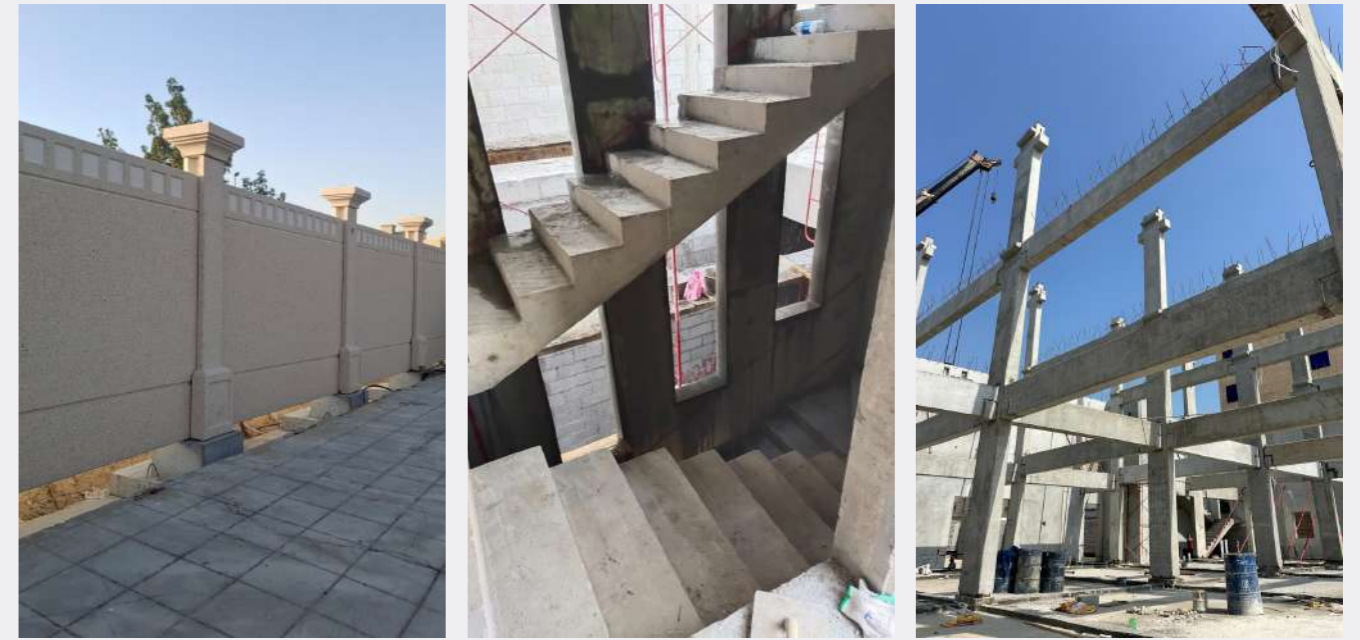
## Concrete Precast Fabrication & Erection

INSHAA (Inshaa Company for Concrete Products and General Contracting) has extensive experience in the design, fabrication, and construction of precast concrete elements such as composite and solid wall panels, wall cladding, columns, beams, stairs, miscellaneous items, and hollow core slabs with thicknesses ranging from 50 mm to 500 mm.

All external precast parts would have a gray or colored finish with a treated surface. We offer value engineering solutions to save costs and convert traditional construction to precast structures. One of the key criteria in design/production to achieve higher quality, time savings, and durability for project delivery is the development of precast concrete structures to be completed on modular buildings.

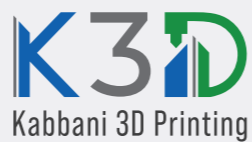
### INSHAA provides Design, Manufacturing, and Installation for its products, which are:

- 1- Hollow Core Slabs
- 2- Precast Columns
- 3- Precast Beams
- 4- Sandblast Wall Bearing Insulated Panels
- 5- Grey Finish Bearing Wall
- 6- Precast Cladding
- 7- Precast Boundary Wall
- 8- Hollow Core Boundary Wall
- 9- Pigmented Wall Panels
- 10- Precast Stairs



# K3D

Advanced 3D Printing & Revolutionary Building Solutions



K3D, Kabbani 3D Printing, a pioneering division under Kabbani Construction Group (KCG), specializes in advanced 3D printing and revolutionary building solutions. Harnessing cutting-edge additive construction technology, K3D delivers innovative, efficient, and sustainable construction solutions that redefine traditional building methods. By integrating advanced robotics, digital fabrication, and custom material science, K3D ensures precision and speed. With a focus on future-forward development, K3D supports KCG's mission to lead in modern infrastructure by offering scalable solutions tailored to the unique demands of the built environment.

**K3D offers the innovative 3D concrete printing for the following sectors:**

- 1- Large-Scale Projects
- 2- Small-Scale Projects
- 3- Landscape

OUR SERVICES



## EMCC

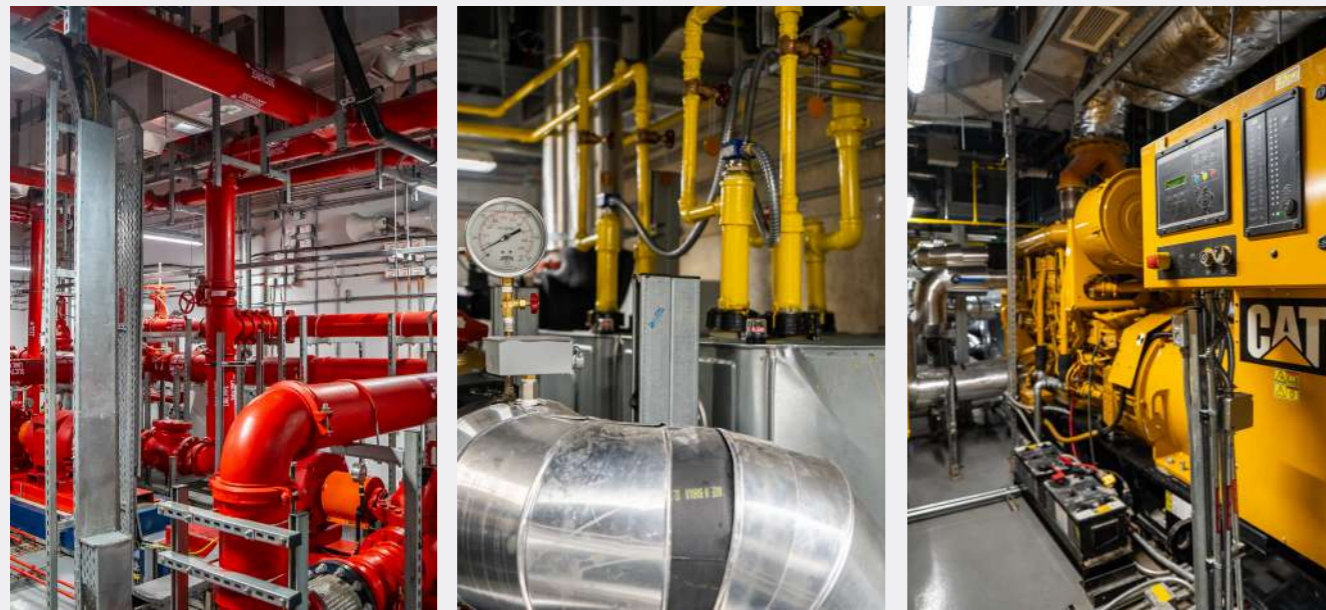
Electromechanical Contracting Company



EMCC (Electromechanical Contracting), a pioneering force in the Engineering, Procurement & Construction sector (EPC), takes pride in its broad range of Mechanical, Electrical, and Plumbing operations (MEP) for medium and large residential, commercial, industrial, medical, and government buildings.

Through dedicated devotion to its clients and various important services supplied without compromise by hundreds of skilled technicians while overseen and monitored by a synergetic team of highly experienced managers, EMCC maintains a respectable position as a leading contributor to the MEP industry.

- 1- Infrastructure
- 2- Firefighting Systems
- 3- Low Current Systems
- 4- Low- & Medium-Voltage Networks and Substations
- 5- Alternative Power Supply
- 6- HVAC Systems
- 7- Air & Gas Networks and Substations
- 8- Pumping Stations
- 9- Plumbing/Piping Systems
- 10- Laboratories, Fume, & Hood Systems
- 11- Tunnel Ventilation System (TVS)
- 12- Building Management Systems (BMS)



# IKK ENERGY

## Renewable Energy Systems



IKK Energy is a division of Kabbani Construction Group (KCG), established in 2018. IKK Energy offers engineering, procurement, and construction services (EPC) to design, supply, install, commission, and maintain complete EV Chargers and Solar PV Systems. IKK Energy addresses residential, commercial, industrial, oil and gas, and utility-scale projects in order to diversify the sources of energy according to Saudi Vision 2030.

IKK Energy provides turnkey services with full in-house capabilities for different systems and delivers optimum solutions with the highest quality warranty and after-sales support.

### 1- EV Chargers

- AC Charging Stations
- DC Fast Charging Stations
- EVCS Infrastructure
- EVCS Backend Software

### 2- Solar Services

- On-Grid Systems
- Off-Grid Systems
- Hybrid Systems
- Operation & Maintenance Services
- Battery Energy Storage System



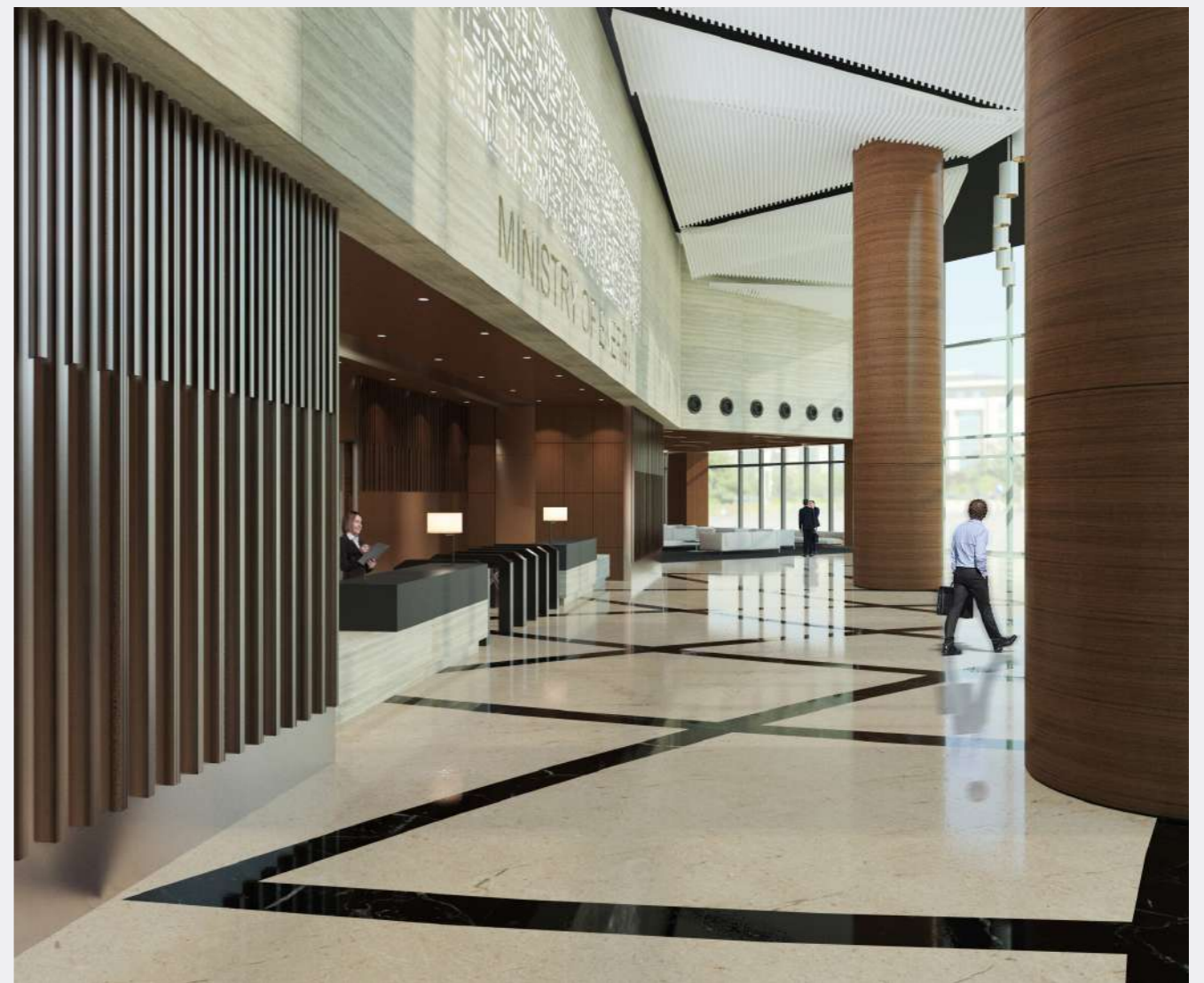
# KAC

## Fitout & Interior Contracting



KAC (Kabbani Architectural Concepts) specializes in Design and Build Construction for residential and commercial buildings, as well as towers and industrial plants. KAC manages the complete construction project from start to finish using project management procedures and sustainable solutions. KAC is dedicated to being the “Builder of Choice” by providing outstanding service. Our focus is on simplicity, innovation, excellence, proactivity, and partnership to provide value-added services to our clients.

- 1- Fit-Out & Interior Contracting Activities
- 2- Furniture Selection and Procurement
- 3- Design & Build Contract Solutions



# KEMS

## Kabbani Exhibition & Museums Solutions



KEMS is a specialized fit-out contractor with a strong foundation in high-spec cultural and exhibition projects. We deliver turnkey interior solutions that combine technical precision with design excellence, serving a wide range of sectors, including public, institutional, commercial, and cultural spaces.

While our expertise in museum and exhibition environments remains a core strength—covering showcases, scenography, AV integration, and conservation labs—our broader capabilities extend to full fit-out works, architectural finishes, refurbishment, and specialized interiors. We bring a detail-driven approach to every project, ensuring alignment with client vision, operational requirements, and international quality standards.

1- Complete Fit-Out Works (Public, Cultural, Commercial, Institutional)

2- Interior & Architectural Finishes

3- Exhibition & Gallery Design and Execution

4- Scenography & Immersive Installations

5- Custom Showcases and Display Systems

6- Lighting, AV & Media Integration

7- Refurbishment & Adaptive Reuse Projects

8- Artifact Storage & Conservation Facilities



## D9S

### Specialized Architectural Finishes



Division 9 Solutions (D9S) is a standalone entity within Kabbani Construction Group, focusing on highly decorative and specialized architectural finishes. D9S has emerged within KCG to service the market in KSA, GCC countries, and the rest of the Middle East. The company has delivered hundreds of prestigious projects, from museums, hospitals, and railway stations to palaces, airports, and boutique retail shops.

The company's name is inspired by its focus on bespoke solutions for floors, walls, and ceiling finishes, typically categorized under Division 9 in construction specifications. D9S, a TERRAZZO market leader for the past decade, is proud to be one of the few NTMA (National Terrazzo & Mosaic Association) international members outside the United States and has won the NTMA International Honor Award for Best International Project in 2023/2024. The mission is to excel in every aspect of its specialties, delivering high-end, flawless service and ensuring peace of mind for clients and end-users.

#### 1- Decorative Interior Floors:

Cast-in-situ Terrazzo, MicroCement Finishes, Comfort Floors, Wood Plastic Composite (WPC), Luxury Vinyl Tile (LVT), Decorative Resinous Quartz Floors, Other Miscellaneous.

#### 2- Suspended Metal Ceiling:

Cell Metal Ceiling, Baffle Metal Ceiling, Metal Mesh Ceiling, Metal Stave Ceiling, Floating Islands, Healthcare Hygienic Metal Ceiling, Standard Metal Tiles Ceiling, Special Shapes Metal Ceiling.

#### 3- Outdoor Hardscape Floors:

Cast-in-Situ Outdoor Terrazzo, Stamped Concrete, Resin Bond Stone Carpet, Exposed Aggregates Pigmented Concrete, Wood & Bamboo Decking, Engineered Stone.



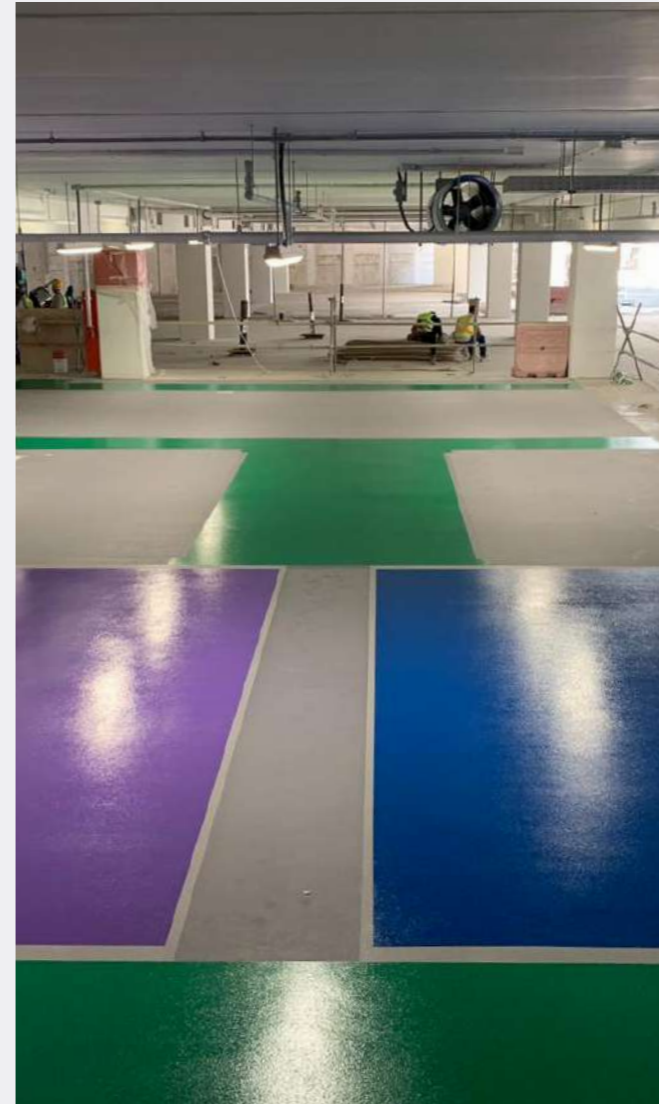
## CRES

Protective Coating Solutions, Insulation & Scaffolding



CRES is a leading provider of specialized coating services for mega projects, with over 35 years of industry experience. With a skilled workforce certified by ARAMCO, they deliver exceptional services in oil & gas fields, chemical plants, industrial factories, and commercial projects. With over 1,000,000 sqm of work completed, CRES is an approved applicator for most international fireproofing material suppliers. They adapt to market demands by partnering with pioneering manufacturers and using the latest industry tools and techniques. Their commitment to excellence is reflected in their high-end professional services, supported by certified manpower and extensive engineering experience, ensuring safety and quality in all projects.

- 1- Blasting & Painting (Onshore-Offshore)
- 2- Fireproofing
- 3- Industrial Insulation
- 4- Scaffolding
- 5- Pipe Rubber & Tank Lining
- 6- Shotcreting & Rock Bolts
- 7- Firestop
- 8- Resin Flooring
- 9- Wrapping
- 10- Rock Theming



## TWINTEC

### Jointless Flooring Contracting



Twintec Saudi, a specialized steel fiber reinforced concrete 'Jointless' flooring contractor, provides a personal product with a high level of performance, environmental sustainability, and aesthetics worldwide through a unique total offer concept of Design-Build-Guarantee delivering superior slabs using Steel Fibre Reinforced Concrete (SFRC) jointless flooring solutions with excellence in design, high quality, and life cost value.

- 1- Freeplan® - 'Jointless' SFRC Ground Bearing Floor Slab.
- 2- Freeplan® XT - 'Jointless' SFRC External Yard
- 3- Twinplan® - 'Jointless' Defined Movement SFRC Floor Slab
- 4- Twintec® ULTIMATE - Seamless Floor Slab
- 5- Twintec® STRUCTURAL - SFRC Structural Raft Foundations
- 6- Twintec® PLUS - Surface Enhancer
- 7- ECO Freeplan® - Flooring with Reduced Environmental Impact
- 8- TSR - Twintec Services and Renovation



# ACMS

## Airfield Construction & Maintenance



ACMS (Airfield Construction & Maintenance Services) is a Saudi enterprise that combines KCG's knowledge and resources. ACMS has a regional and international reputation for constructing and maintaining commercial and military airfields.

ACMS has extensive airside expertise in all aspects of airfield pavement development and maintenance facets. ACMS has designated airfield maintenance personnel to do routine maintenance to ensure that the airfield always remains operational.

- 1- Airfield Construction
- 2- Airfield Maintenance
- 3- Airfield Treatment
- 4- Airfield Repairs
- 5- Concrete Paving
- 6- Qualitative Analysis



## KPT

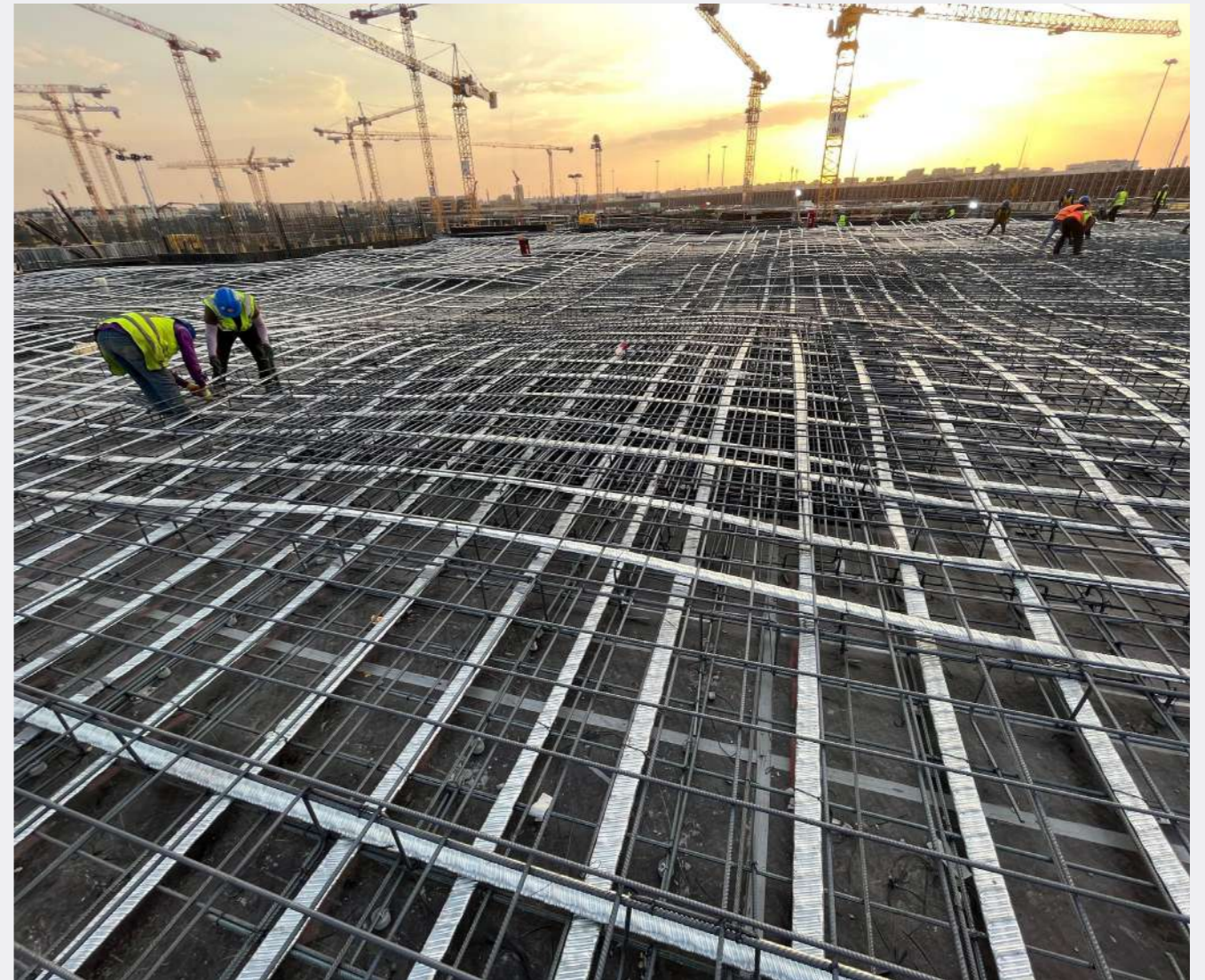
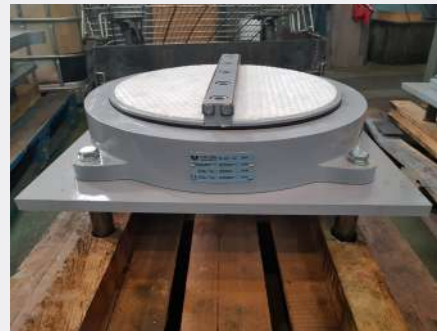
### Post-Tensioning Systems



Kabbani Post-Tensioning (KPT), a highly specialized division within KCG, offers cutting-edge solutions in post-tensioning, expansion joints, bridge bearings, and more to the Saudi market. By integrating expertise from renowned international companies such as OVM International Ltd. and VERDUS.L. International, KPT delivers comprehensive and advanced engineering solutions for building and bridge projects.

Our collaboration with these international experts ensures that we utilize the latest technologies and best practices, resulting in engineering solutions that are both cost-effective and time-efficient. This integration allows KPT to enhance structural integrity, optimize construction processes, and significantly reduce project timelines and costs. By leveraging global innovations and local expertise, KPT drives the development of Saudi Arabia's infrastructure, offering reliable, high-quality solutions that meet the highest standards of safety and performance.

- 1- Post Tensioning System
- 2- Bridge Construction Equipment
- 3- Bridge Bearings
- 4- Expansion Joints
- 5- Stay Cable System
- 6- External PT System
- 7- LDM Ground Anchor System



# INSPECTECH

Advanced Infrastructure Management Solutions



Inspectech, a specialized division of KCG, is one of the best Specialized Engineering firms in the Middle East to deliver advanced Civionic Solutions, the seamless integration of civil engineering and electronics. Civionics combines the power of modern electronic and information technologies with civil infrastructure applications, redefining how we monitor, assess, and maintain the built environment.

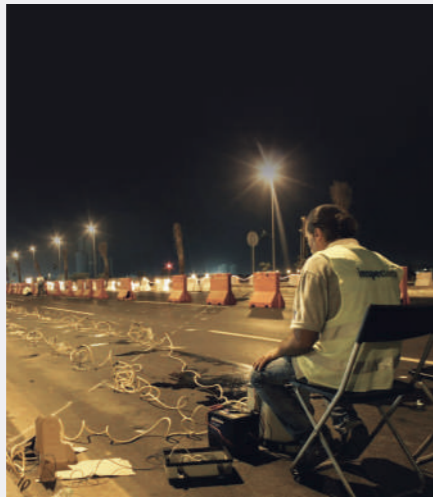
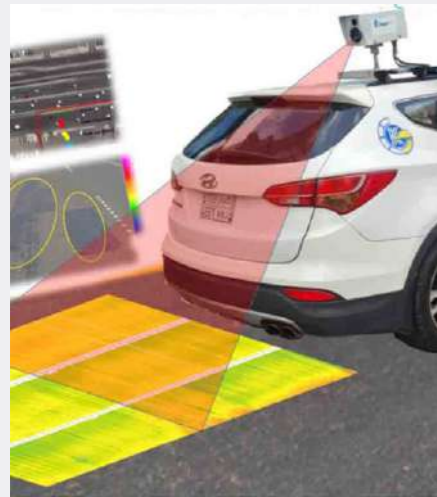
Founded with the mission to modernize infrastructure management, Inspectech merges traditional structural assessment with state-of-the-art monitoring & testing systems. Our approach enables real-time, data-driven insights that help detect issues early, minimize risk, and optimize long-term performance. By focusing all of our intellectual and technological resources on understanding the current condition of structures, we empower asset owners and operators to make informed decisions. Inspectech collaborates closely with leading international technology partners to deliver customized, cost-effective engineering solutions that extend the service life of assets while staying within budget constraints.

## 1- Engineering & Evaluation

- Structural Condition Assessment
- Special Inspections
- Structural Analysis
- Development / Verification of Structural As-Built Drawings
- Structural Load Testing
- Building Information Modelling
- Asset Management Software

## 2- Testing & Instrumentation

- Non-Destructive Testing (NDT)
- Geophysical Testing and Survey
- Subsurface Utilities Engineering
- Structural Health Monitoring
- HD Infrared (IR) Thermography Scanning
- Pipeline Inspection Services
- Heritage/Historical Structures Assessment
- Digital Engineering & Reality Capture Solutions



## STRUCTURAL SYSTEMS

### Concrete Repair & Soil Improvement



Structural Systems (SS) was established as a distinct entity under the KCG family to address the increasing demand and provide ample space for the expansion of KCG's specialized activities. This decision followed significant success and growth in our concrete repair, structural strengthening, and condition assessment endeavors. Identifying the root cause of concrete issues is crucial for devising effective repair techniques. Unlike straightforward codes with detailed design techniques, repair systems defy easy categorization, making a nuanced understanding essential. This comprehension allows our solutions to address both the cause and the resulting impact. The quality, perceived integrity, and potential durability of a structure are largely determined by its construction.

- 1- Structural Repair & Strengthening (Concrete Repair, Steel Jacketing, CFRP System & Post-Tensioning Solutions).
- 2- Geotechnical Solutions (Soil Stabilization, Soil Injection, Micropiling, and Chemical Grouting).
- 3- General Maintenance for Bridges & Tunnels. (Expansion Joint Replacement, Hydraulic Jacking & Bearing Pad Replacement).
- 4- Concrete Structural Protection (Protective Coating, Capillary Waterproofing, Anti-Carbonation & Chemical Resistance Coating).
- 5- Concrete Structural Demolition (Concrete Cutting, Core Drilling, Controlled Demolition).
- 6- Corrosion Protection (Cathodic Protection).
- 7- Leakage Treatment.



# ARCHEOTECH

## Archaeological Field Management Solutions



Archeotech (Archeology Field Management Solutions) intends to bring together experts in Archeological Investigation, Heritage Consultancy, Geophysical Investigation, Geomatics, Photogrammetry, and Digital Imagery to help with the research and protection of archaeological and cultural values.

Archeotech is also uniquely positioned to leverage its sister firm Inspectech's extensive knowledge in existing structure condition assessment and subsurface imaging and evaluation. Inspectech's international partner, "Geostudi Astier, Italy," has extensive experience in geophysical applications in archaeology.

### 1- Heritage Consultancy

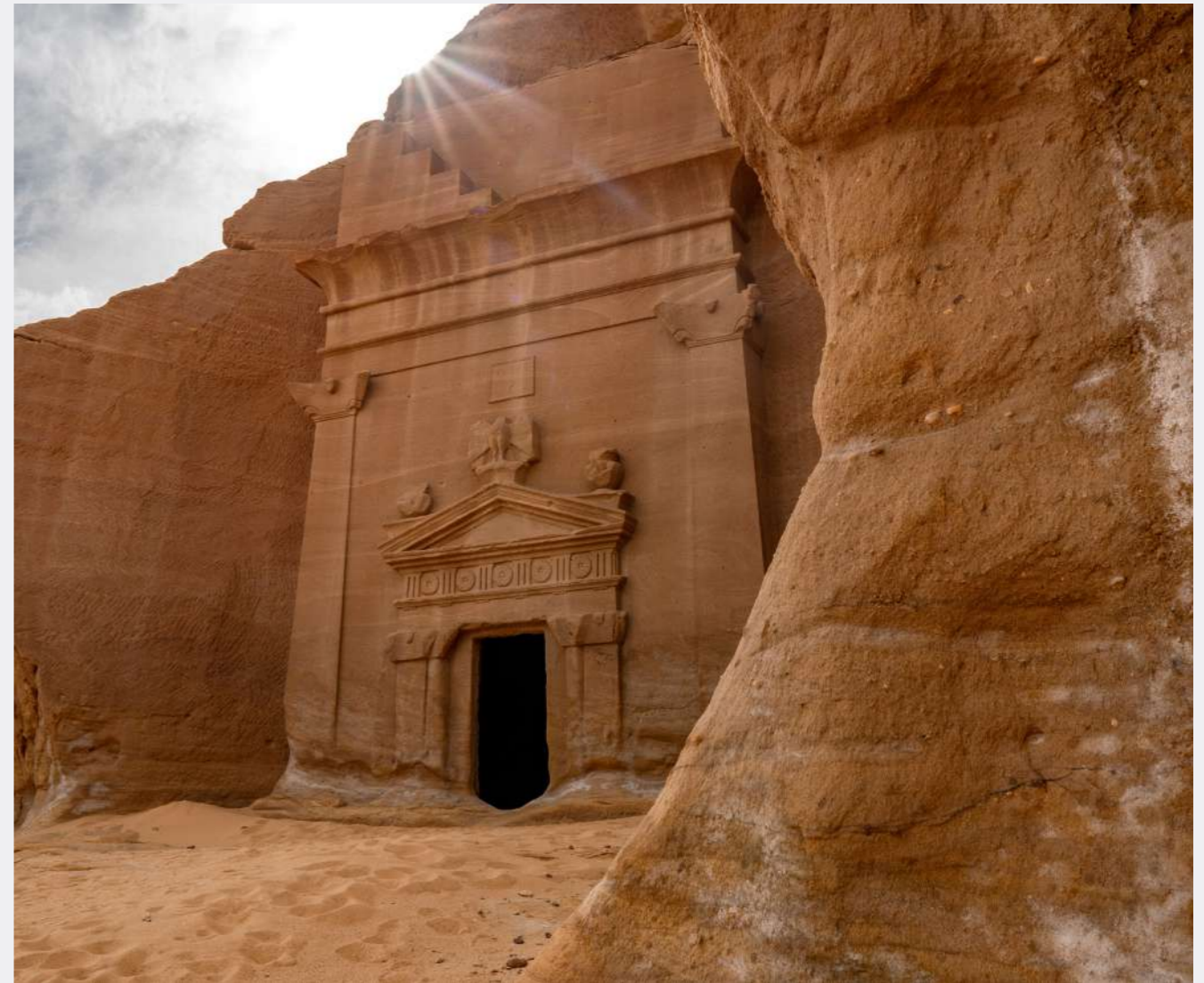
- Early Development Advice
- Rapid Site Assessment
- Heritage Impact Assessment

### 2- Archeological Site Investigation

- Evaluation
- Archeological Excavation
- Archeological Watching Brief

### 3- Supporting Services

- Condition Assessment
- HIA for Existing Structures



## STRUCTURAL SYSTEMS HRC UNIT

### Heritage Restoration & Conservation



HRC, a dedicated business unit under Structural Systems, specializes in Heritage Restoration & Conservation and Mud Village Conservation. We are committed to preserving Saudi Arabia's cultural heritage and art through meticulous restoration practices and innovative conservation techniques, ensuring historical sites and structures are maintained for future generations. Our expertise combines traditional craftsmanship with modern technology, delivering exceptional results in heritage preservation and cultural care.

- 1- Conservation and Restoration of Mud, Stone and Concrete Buildings.
- 2- Immediate Intervention.
- 3- Soil Stabilization and Foundation Reinforcement.
- 4- Documenting, Dismantling, and Reassembling of Heritage and Historical Elements.
- 5- Restoration Of Stone, Marble, Plaster, Wooden, And Metal Elements In Heritage And Historical Buildings.
- 6- Structural Strengthening Works For Walls, Ceilings, Arches, Domes, And Other Structural Elements
- 7- Fine Restoration Works.



# SMC

## Marine Works & Infrastructure



KCG and Maridive Offshore Projects (MOP) have partnered to provide offshore projects on a turnkey basis. KCG has a diversified portfolio of engineering and contracting solutions in the construction industry, while MOP is a market leader in OffShore projects. MOP aims to supplement the Group's fleet with integrated engineering, survey, and diving personnel who can operate and maintain offshore infrastructure. The management of MOP decided to build this team of divers by only recruiting engineers to problem-solve and save significantly on delivering projects. This problem-solving culture has become the core of the company to build the aimed reputation as one of the field's leaders in the Middle East.

We believe that the combined capabilities and experiences of both companies in engineering, equipment, and project management got together to tackle the most challenging infrastructural projects and qualify KCG for complex Offshore and Onshore Construction projects with full & integrated contracting solutions.

- 1- Vessels Chartering
- 2- Towage
- 3- Salvage
- 4- Oil spill containment and environment control
- 5- Hydrographic/ geophysical survey
- 6- Offshore inspection
- 7- Underwater structure repair
- 8- Pipeline installation
- 9- Water intake installation and maintenance
- 10- Offshore construction



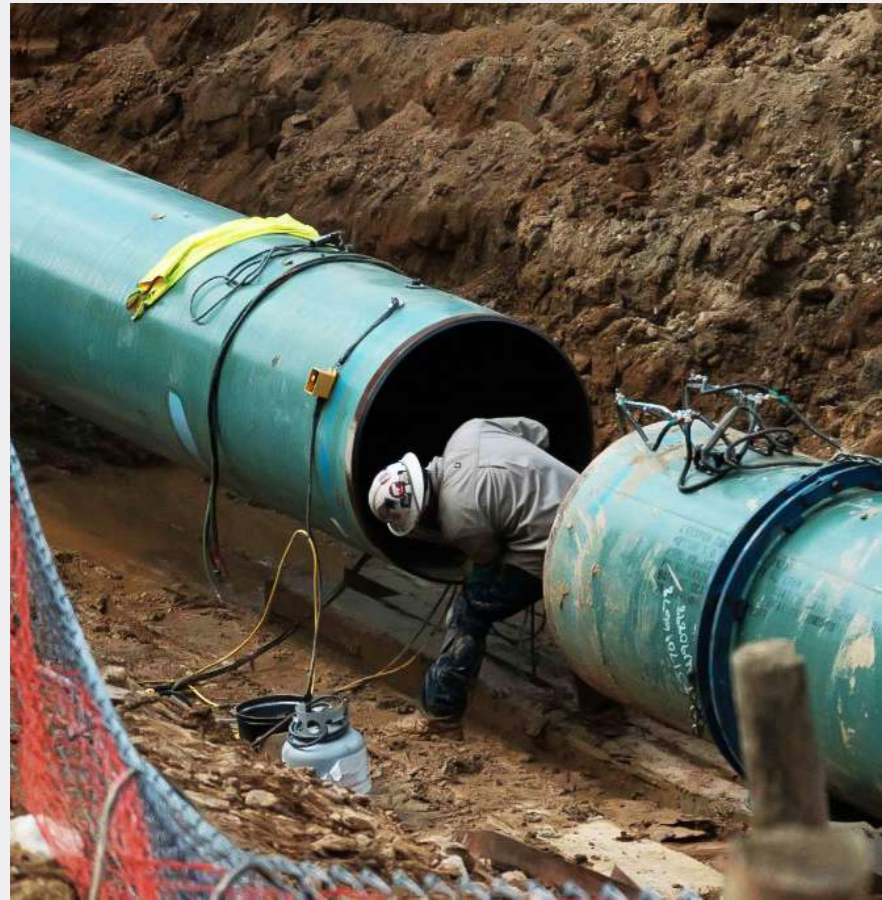
# SOGEC

## Cathodic Protection & Heat Treatment



SOGEC was initially launched in 2001 as a part of Kabbani Construction Group (KCG) to address the acute needs of the Oil & Gas Industry for Cathodic Protection (CP), Corrosion Monitoring, Non-Destructive Testing (NDT), Vapor Corrosion Inhibitor (VCI), Inspection Services & Heat Treatment (HT). SOGEC leveraged the group's financial & human resources while capitalizing on the vast experience of engineering and technical staff.

1. Cathodic Protection Services
2. Corrosion Monitoring Services
3. Vapor Corrosion Inhibitor (VCI)
4. Non-Destructive Testing (NDT)
5. Heat Treatment
6. Inspection Services



## ISD

### Industrial Construction, Repair & Maintenance



ISD (Industrial Services Division) is a specialized contractor supporting Saudi Arabia's industrial belts. ISD has successfully performed numerous repairs and maintenance projects around the nation, mostly for subsidiaries of Sabic, SWCC, Marafiq, SEC, Sadara, Farabi, Tasnee, and other important industrial clients. ISD's distinctive approach, led by highly skilled engineers and personnel, entails a thorough understanding of the facilities and the development of a comprehensive remedial plan. This approach extends the service life of the industrial structure and ensures minimal disruption of facility operations, with a strong emphasis on safety.

- 1- Conditional & Risk Assessments
- 2- Blast Resistance & Mitigation
- 3- Structural Concrete Repair
- 4- Steel Structure Upgrades
- 5- Composite Strengthening
- 6- Industrial Maintenance
- 7- Linings & Coatings
- 8- Marine & Underwater Repairs

- 9- Waterproofing
- 10- Corrosion & Protection Control
- 11- Mechanical Piping & Fabrication
- 12- Electrical Instrumentation
- 13- Re-Tubing of Heat Exchanger
- 14- Hydro-Jetting / Pressure Cleaning
- 15- Bundle Pulling Services



## SPECIALIZED TUNNELING LTD.

Micro-Tunneling & Tunneling Technologies  
Kabbani Concord Partnership



STL, in partnership with KCG and CONCORD, provides advanced pipe jacking solutions to meet the infrastructure demands of Saudi Arabia. KCG specializes in infrastructure and underground utility construction, while CONCORD specializes in tunneling. This integration allows for comprehensive and fully integrated contracting solutions for challenging infrastructure projects. STL's tunneling services utilize the latest technologies and skilled staff experience to ensure precision and efficiency. They have a proven track record in executing complex tunneling projects, particularly in congested urban areas and significant national sites like the Suez Canal. STL's pipe jacking method, combined with microtunneling machines, is crucial for installing sewerage, water supply, and cable infrastructure beneath roads, railways, and water channels. This method minimizes disruption to existing infrastructure and ensures safety protocols and real-time monitoring. STL also offers advanced segment lining systems for transportation networks and utilities, surpassing traditional pipe jacking methods for tunnels exceeding 3500mm in diameter or involving curves.

### Tunneling Services Include:

#### 1- Pipejacking

Combined with micro-tunneling machines, it is crucial for installing sewerage, water supply, and cable infrastructure beneath roads, railways, and water channels.

#### 2- Segment

Advanced segment lining systems for transportation networks and utilities using precast concrete or steel segments for durable, structurally sound tunnel linings withstand various ground conditions and loads.



## KST

### Soil Stabilizing Techniques



KST is a division within Kabbani Construction Group (KCG), fully dedicated to providing soil stabilization solutions through innovative products and techniques. KST is developed in line with Kabbani Construction Group's tradition and vision to create specialized contracting service companies to cater to the market with niche solutions and techniques. Thus contributing to the advancement of the construction sector within Saudi Arabia. KST will also strive to introduce environmentally friendly solutions to the construction sector in line with Saudi Arabia's 2030 Vision.

- 1- Soil Stabilization and Protection
- 2- Soil Reinforcement
- 3- Erosion Control
- 4- Slope Protection
- 5- Channels and Bund Lining

#### KST utilizes the following innovative solutions:

- 1- Geosynthetic Cementitious Composite Mat (GCCM) is a unique solution manufactured by **Concrete Canvas** that replaces ordinary concrete used in soil protection applications.
- 2- Polymer and Enzymatic Sprayed Soil Stabilizers.
- 3- Geocell Soil Reinforcement Mesh.
- 4- Geogrid Wrapping System for Soil Stabilization.
- 5- DEPLOY Inflatable Concrete Tanks.



## SUW

### Waterproofing & Damp Proofing & Firestop



SUW (Saudi United Waterproofing Co.) specializes in contracting tasks involving waterproofing, firestopping, flooring, EIFS (Exterior Insulation Finishing System), and concrete rehabilitation. SUW, which was founded in 2002, initially exclusively provided waterproofing, fire-stopping, flooring, EIFS (Exterior Insulation Finishing System), and concrete repair services to SBG projects but has since expanded its client list to include a wide range of businesses within the Saudi market.

SUW's team is filled with high-caliber essential employees and talents, establishing the organization as an extraordinarily dependable and substantial contractor, focused solely on medium- to large-scale contracts and projects.

- 1- Waterproofing
- 2- Damp Proofing
- 3- Roof & Thermal Insulation
- 4- Lining Systems
- 5- EIFS (Exterior Insulation Finishing System)
- 6- All Roof Retrofit Systems
- 7- Industrial & Commercial Flooring
- 8- Firestop
- 9- Concrete Repair



# INTEGRATED ENGINEERING & CONTRACTING SOLUTIONS


Powered by Digitization & Sustainability

**24** Specialized Construction  
& Engineering Companies


## KEY SECTORS



**Buildings**



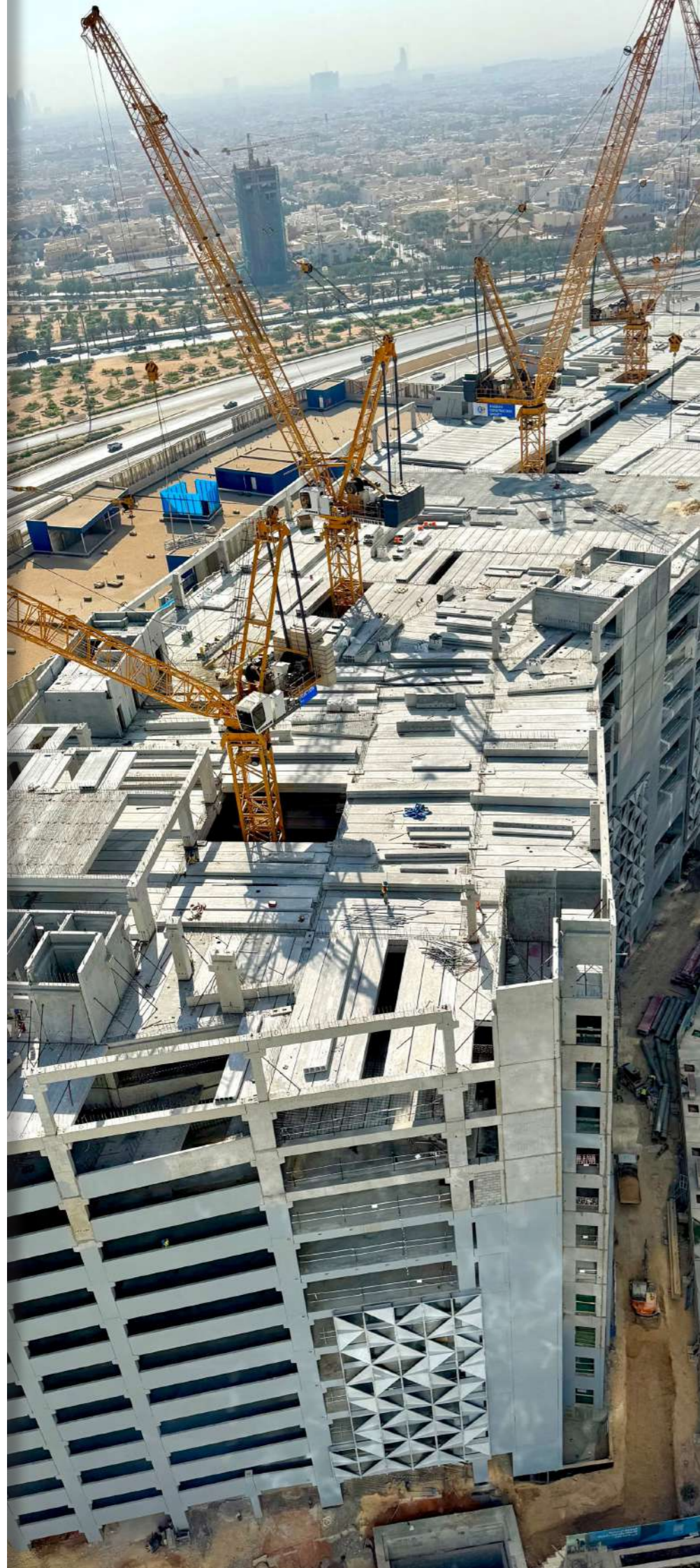
**Infrastructure  
& Transportation**



**Industrial  
& Energy**



**Heritage  
& Culture**



### Buildings Integrated Solutions

- 1. EPC and Turnkey Construction
- 2. Structural Assessment, Rehabilitation & Strengthening
- 3. Fit-out Renovation & Development
- 4. 3D Construction Solutions



## 1- EPC and Turnkey Construction

KCG delivers tailored construction solutions for complex, fast-track projects, ensuring the highest standards of quality and project execution at every stage. From concept to completion, our integrated approach encompasses all engineering and contracting disciplines, with a steadfast focus on safety and environmental compliance. We leverage advanced BIM applications for streamlined planning, design, execution, risk mitigation, and asset lifecycle management. By customizing engineering and construction processes with a disciplined approach, we guarantee the most efficient and satisfying project outcomes for our clients.

### This Service is Offered By



Precast Fabrication & Erection



Earthworks & Urban Development



Electromechanical



Waterproofing & Thermal Insulation



Fit-out & Interior Contracting



ARAMCO projects



Post-Tensioning Systems



EV Chargers & Solar Car Parking



Exterior Insulation and Finishing Systems EIFS



Protective Coating Solutions, Insulation & Scaffolding



Innovative Architectural Finishes



Piling, Shoring & Dewatering

Buildings (New Construction)



## 2- Structural Assessment, Rehabilitation, and Strengthening

We ensure the structural integrity of our client's assets through comprehensive assessments, advanced field investigations, and non-destructive testing (NDT), delivering tailored repair solutions. With over 40 years of experience, our team of qualified engineers and skilled workforce specializes in structural rehabilitation and strengthening, guaranteeing the long-term durability of our clients' structures. We implement state-of-the-art structural health monitoring systems and leverage digitization, including 3D Laser Scanning, to create 3D models and drawings that are as accurate as the existing structure, which can be further developed into 4D/5D BIM models.

### This Service is Offered By



Structure Rehabilitation & Strengthening



Structural Assessment & NDT

Buildings (Existing)



### 3- 3D Construction Solutions

Further strengthening KCG's leadership in the construction industry, we are integrating 3D concrete printing into our advanced solutions. Providing 3D construction will enhance efficiency, reduce time and costs, and offer more intricate solutions that exceed the limitations of conventional construction methods. This innovative approach complements KCG's existing services by enabling rapid prototyping, on-demand manufacturing, and contributing to sustainability by minimizing material waste and energy usage.

#### Services This Service is Offered By



Large-Scale Housing



Office of the Future



Public Buildings



Shoreline Protection Wall



Reef



Commercial Building



Architectural Landscapes



Boundary Wall



Heritage



Buildings (3D Construction)



### 4- Fit-out Renovation & Development

At KCG, we tailor our engineering and contracting services to renovate and develop building fit-out for our clients, using customized engineering and construction methodologies to meet their specific requirements and expectations. We excel in fit-out projects by integrating advanced digital and sustainable solutions. Our expertise spans commercial, hospitality, and educational facilities across Saudi Arabia (KSA), where we consistently deliver exceptional quality and innovative designs that align with each project's unique goals and every client's vision.

#### This Service is Offered By



Fit-out & Interior Refurbishment & Rehabilitation



Electromechanical



Waterproofing & Thermal Insulation



Protective Coating Solutions, Insulation & Scaffolding



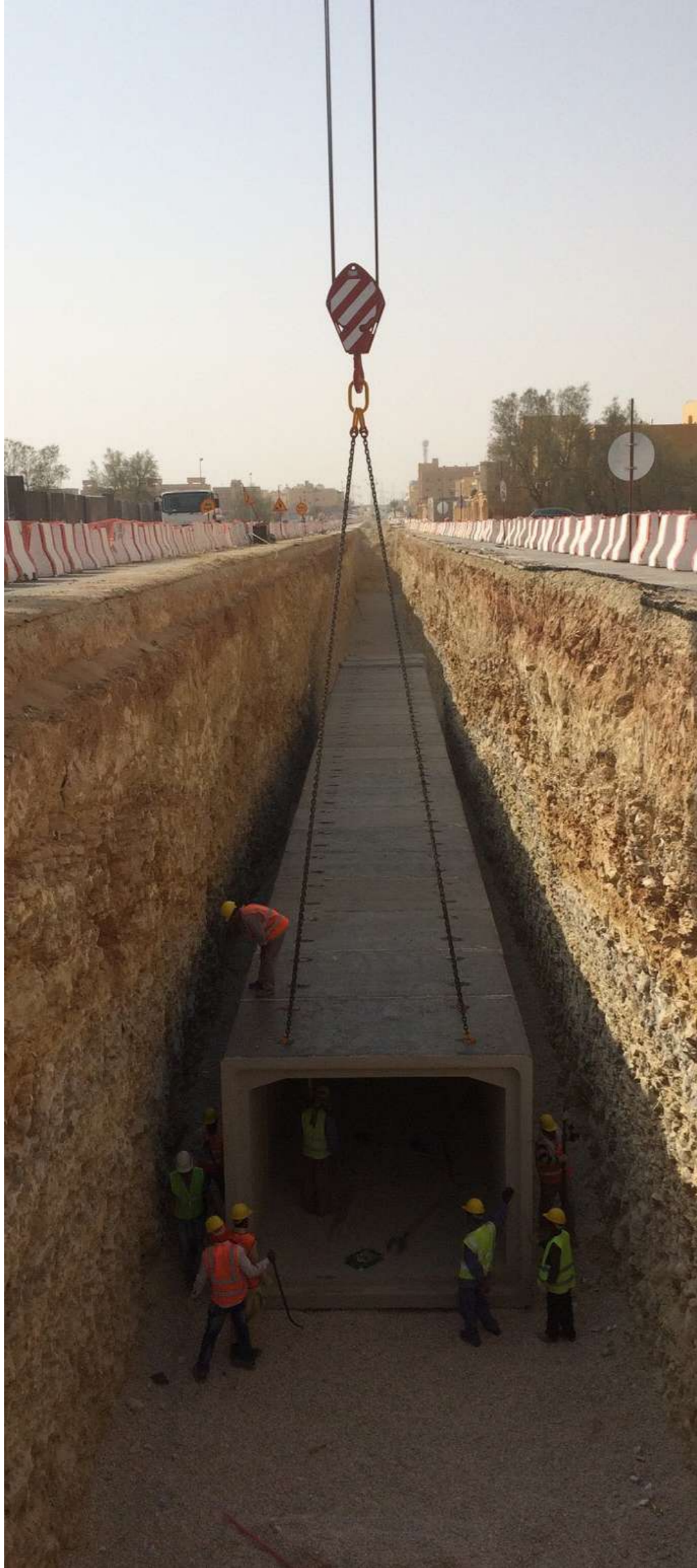
Innovative Architectural Finishes



Exhibitions and Museums Solutions

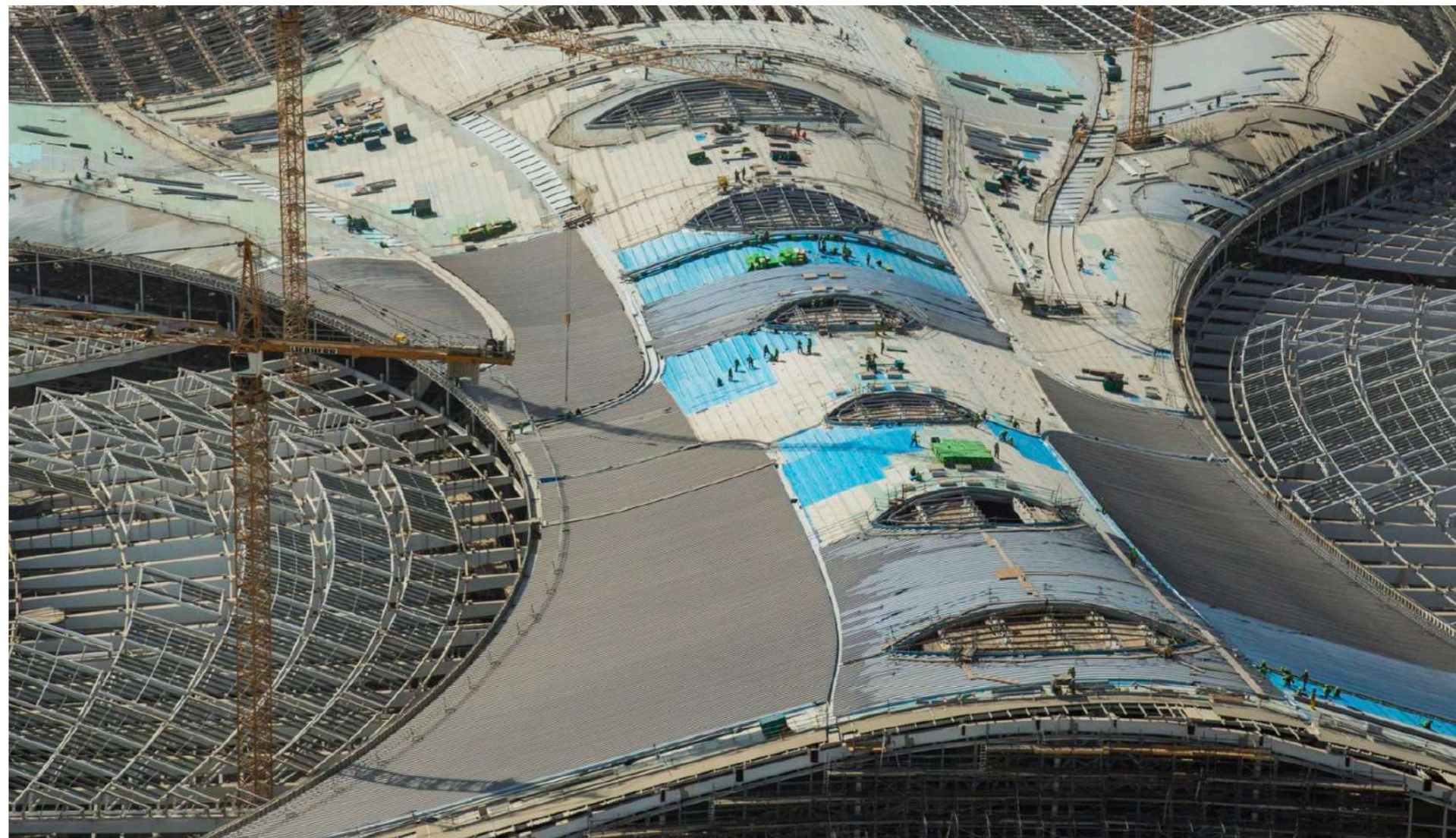
Buildings (Existing)





## Infrastructure & Transportation Integrated Solutions

1. Airports
2. Roads Construction
3. Bridges Assessment, Rehabilitation & Strengthening
4. Tunnels & Underground Utility



## 1- Airports

### Airside Construction & Maintenance

Globally recognized as a leader in airside construction and maintenance, KCG has successfully completed projects at over 30 airports and air force bases across the Middle East. Our advanced solutions, engineering expertise, and specialized equipment deliver superior quality for civilian and military airfields. From paving and retexturing to grooving, we provide comprehensive airfield pavement and enable solutions throughout all project phases, ensuring exceptional results while maintaining the highest operational efficiency and airfield safety standards.

#### This Service is Offered By



# Airports



## 2- Roads Construction

We uphold the capabilities and experience to deliver complex and challenging road construction projects with top-tier engineering & construction solutions for road projects. Leveraging cutting-edge engineering methodology using numerous equipment to deliver large-scale projects, we handle road development from initial planning and design to construction and ongoing maintenance. Our commitment to road quality and sustainability ensures infrastructure that stands the test of time, providing safe and efficient transportation solutions.

#### This Service is Offered By



# Roads Construction



### 3- Bridges & Underpasses (Existing)

#### Structural Assessment, Rehabilitation, & Strengthening

Empowering our clients with tailored rehabilitation solutions for bridges and underpasses, we offer fully integrated in-house engineering and specialized contracting capabilities. With over 40 years of expertise, our team conducts comprehensive assessments, field investigations, and NDT testing, developing customized repair methodologies to ensure structural strength and durability. We also integrate advanced bridge health monitoring systems with digitization technologies like 3D laser scanning to create precise models and drawings, which can be further developed into 4D/5D BIM models. Our expertise in bridge assessment and rehabilitation, combined with bridge load testing, enhances safety, optimizes performance, and ensures resilient, reliable assets for our clients.

#### This Service is Offered By



Structure Rehabilitation & Strengthening



Shotcreting & Rock Bolts Protective Coating Solutions



Piling, Shoring & Dewatering



All-In-One Solar Street Light System



Post-Tensioning Systems



Electromechanical



Roads Construction



Bridge Load Test, Road Assessment, Structural Assessment & NDT

### 4- Tunnels & Underground Utility

With a strategic emphasis on underground utilities, KCG combines the expertise of international specialists to deliver advanced tunneling systems, including Slurry and EPB technologies, for complex and technically demanding projects. Our in-house engineering and contracting teams, characterized by a commitment to precision and safety, oversee the execution of each project, as evidenced by landmark achievements such as the Qassim Storm and Sewage Network and microtunneling for the NWC Sewage Network in Jeddah. By utilizing state-of-the-art pipejacking and segment tunneling equipment, along with extensive field expertise, KCG offers engineering solutions tailored to address the unique challenges of each project, ensuring the highest standards of efficiency, reliability, and quality throughout every phase of execution.

#### This Service is Offered By



Underground Utility Construction



Tunnels Structural Assessment & Pipeline Inspection



Bridge Load Test, Road Assessment, Structural Assessment & NDT



Piling, Shoring & Dewatering



Electromechanical

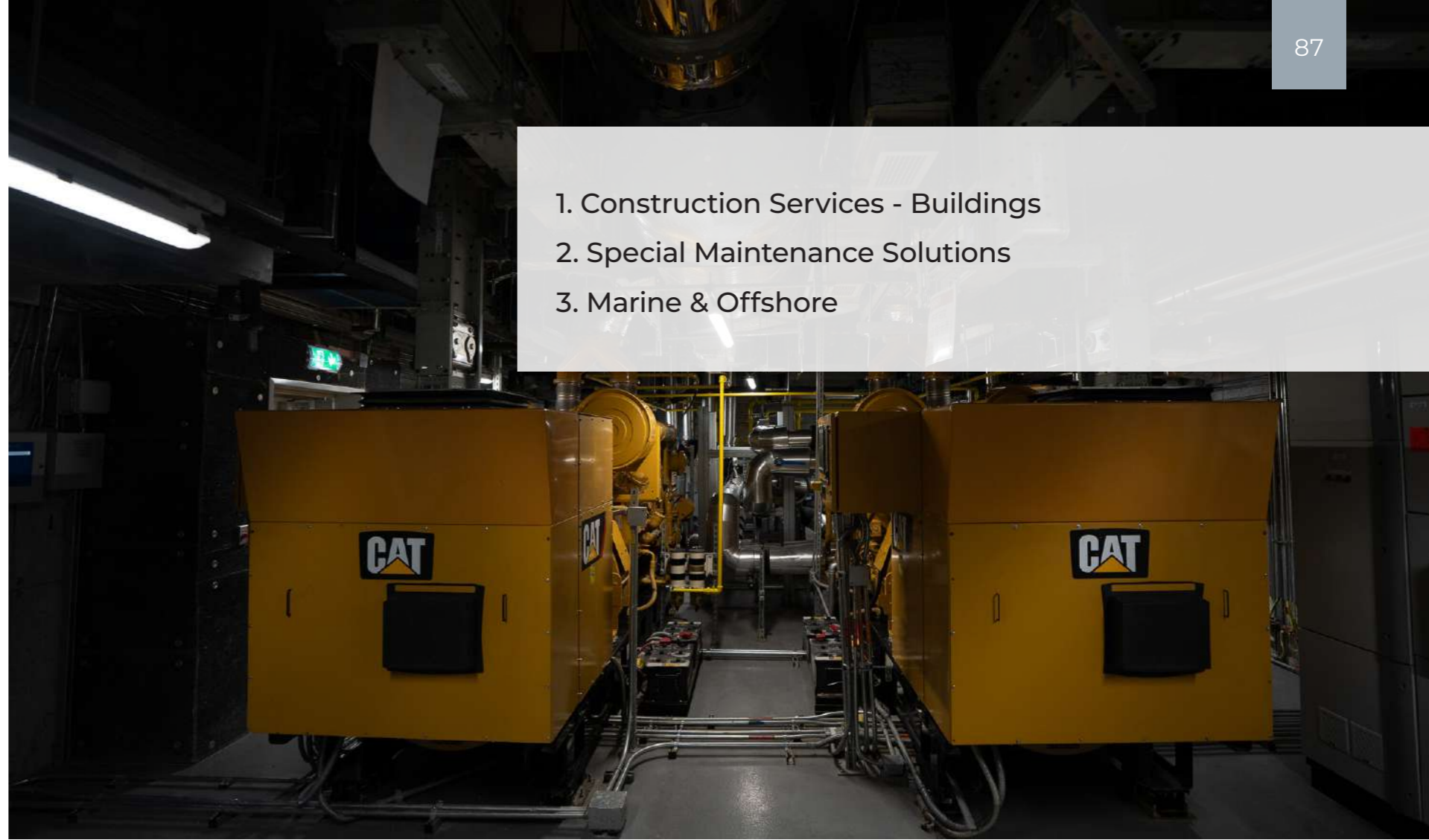


Precast Fabrication & Erection





1. Construction Services - Buildings
2. Special Maintenance Solutions
3. Marine & Offshore



## 1- Construction Services - Buildings

Since 1987, KCG has built a legacy of excellence in delivering world-class construction services for associated buildings in the oil and gas sector. With a qualified 1st classification in building with ARAMCO, KCG's expertise is backed by cutting-edge civil engineering and a steadfast commitment to meet ARAMCO's special requests.

## 2- Special Maintenance Solutions

From structural upgrades to tailored maintenance solutions, KCG provides specialized and customized solutions for industries like SABIC, SWCC, Marafiq, SEC, and Sadara.

## 3- Marine & Offshore

KCG has partnered with international experts to offer Marine & Offshore engineering, construction, and maintenance solutions. By certified engineers, technicians, and divers, we ensure top-tier operation and maintenance for offshore projects.



### This Service is Offered By



Oil & Gas  
Construction and  
Maintenance



Industrial Insulation,  
Wrapping, Scaffolding,  
Protective Coating



Special Industries  
Construction and  
Maintenance



Steel Fiber Reinforced  
Concrete Slabs



Specialized Oil & Gas  
Engineering Services



Structure Rehabilitation  
& Strengthening



Offshore & Marine  
Construction and  
Maintenance



- Leak Detection & Pipeline Inspection
- Geophysical & Geotechnical Survey
- As-Built Laser Scanning, As Existing Model and Drawings, BIM Engineering 4D/5D



Precast Fabrication  
& Erection



Piling, Shoring &  
Dewatering





## Energy Integrated Solutions

### EPC Solar Power Solutions

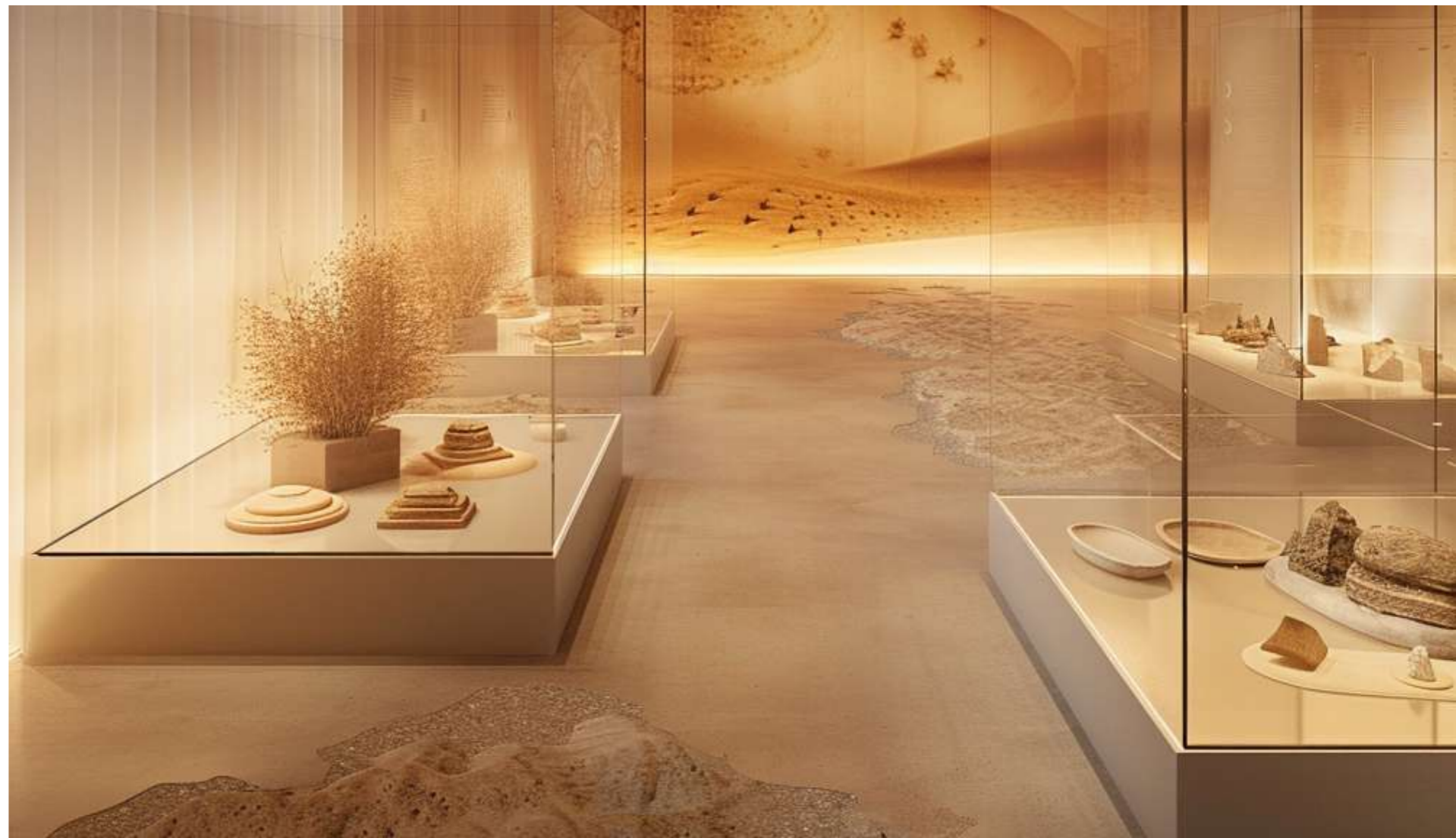
KCG delivers turnkey solar PV services with cost-effective and sustainable solutions, supporting green transitions for residential, commercial, industrial, oil and gas, and utility-scale projects. Our in-house expertise covers On-Grid, Off-Grid, and Hybrid Systems, Battery Energy Storage, Solar EV Chargers, and Smart Parking Solutions, ensuring unmatched reliability and reduced carbon footprints. We foster smarter, healthier communities across Saudi Arabia and the Middle East by leveraging advanced technologies. We build a cleaner and more sustainable future.

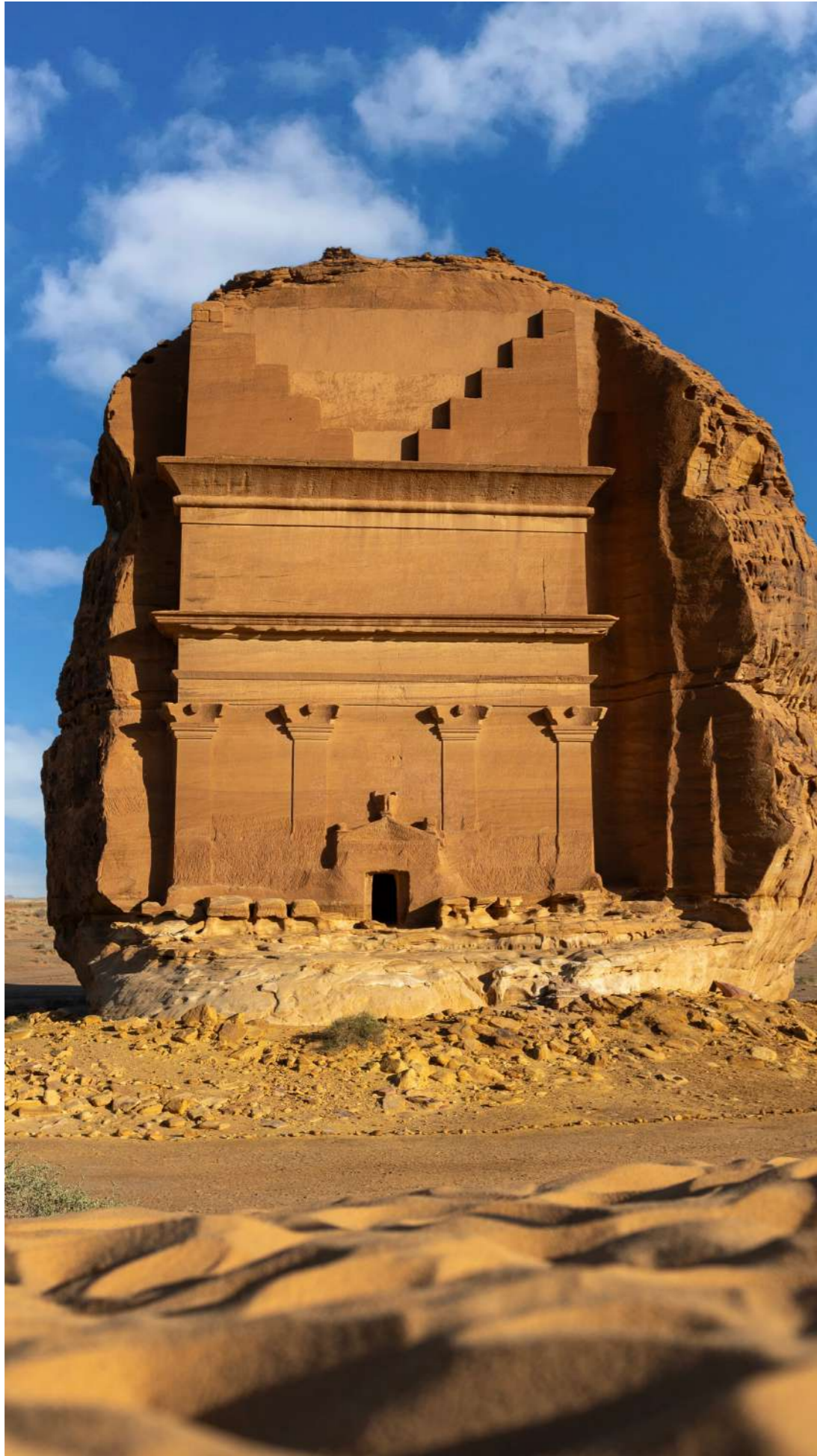




## Heritage & Culture Integrated Solutions

1. Consultancy & Archeological Investigation
2. Buildings Conservation, Restoration, and Refurbishment (Mud -Stone- Concrete)
3. Museum Refurbishment & Rehabilitation
4. Exhibitions Solutions





## This Service is Offered By



Heritage  
Restoration &  
Conservation



Structure Rehabilitation  
& Strengthening



Exhibitions and  
Museums Solutions



Electromechanical



Specialized  
Architectural Finishes



Archaeological Field  
Management Solutions  
& Heritage Consultancy



Fit-out & Interior  
Refurbishment &  
Rehabilitation



Structural Assessment & NDT  
• As-Built Laser Scanning, As  
Existing Model and Drawings, BIM  
Engineering 4D/5D



# Sustainability & Digital Transformation

## “Pioneering Sustainable and Smart Construction”

At KCG, sustainability and digital transformation are at the heart of our operations. We are committed to reducing our carbon footprint and building a greener future through:

- 1 Sustainability Commitment
- 2 Digital Transformation

KCG Is Aligned With

VISION رؤية

2030

المملكة العربية السعودية  
KINGDOM OF SAUDI ARABIA

# Sustainability Commitment

## Smart Construction for Smarter Outcomes

### 1 Renewable Energy Solutions:

Turnkey solar PV systems, EV charging stations, and smart parking hubs (e.g., NEOM Solar Villages, Amazon Warehouse) to accelerate the green transition.

### 2 Green Building Practices:

Eco-friendly materials and energy-efficient designs certified by LEED/ESTIDAMA standards.

### 3 Waste Reduction:

Circular economy models that recycle 85%+ of construction waste.

KCG Is Aligned With

رؤية  
VISION

2030

المملكة العربية السعودية  
KINGDOM OF SAUDI ARABIA

# Digital Transformation

## Building a Greener Future

### 1 Advanced BIM Applications:

4D/5D BIM for real-time project lifecycle management, reducing delays by 30% and costs by 15%.

### 2 3D Laser Scanning & AI:

Precision structural assessments (e.g., Jeddah Bridges) and AI-driven safety monitoring on-site.

### 3 IoT & Automation:

Smart sensors for predictive maintenance in industrial facilities (e.g., ARAMCO plants).

KCG Is Aligned With

VISION رؤية

2030

المملكة العربية السعودية  
KINGDOM OF SAUDI ARABIA



Kabbani Construction Group's market is not restricted to the Kingdom of Saudi Arabia alone. In fact, KCG's regional footprint extends to other countries like Egypt, the UAE, Oman, and many others.

Picture: International Airport | Kuwait

**KCG Emirates & IMKK**



KCG Emirates was established in 2006 as the UAE branch of KCG Saudi Arabia, aiming to meet the growing demand for high-quality, specialized contracting services in the field of waterproofing and protective coatings. To further expand its capabilities, IMKK was founded in 2016 to cater specifically to the industrial and oil & gas sectors. Its range of services includes insulation & cladding, fireproofing, scaffolding, blasting & painting, refractory works, thermal spray, composite wrapping, and rubber lining. Over a relatively short period, both KCG Emirates and IMKK have established themselves as market leaders in the UAE. Their areas of expertise has expanded to include All types of waterproofing solutions, car park floor coatings, anti-carbonation coatings for bridges, External Insulation Facade Systems (EIFS), and concrete repair, in addition to IMKK's extensive industrial service offerings. KCG and IMKK have proudly contributed to numerous prestigious projects across the UAE, consistently demonstrating their capability to deliver top-quality services within the required timeframes.

Some of the landmark projects that KCG Emirates & IMKK have contributed to include the following:

**KCG Emirates Projects**

- Louvre Abu Dhabi
- Brakah Nuclear Power Plant
- Zayed National Museum
- Museum of the Future
- Natural History Museum
- Abu Dhabi International Airport Midfield Terminal
- Dubai International Airport concourse 4
- Sea World Abu Dhabi
- Moh. Bin Rashed City development
- Blue Waters Island development

**IMKK Projects**

- ADNOC Gas Fabric Maintenance Program for Trains 1,2&3 Das Island
- ADNOC Waste Heat Recovery Project (WHRP)
- ENOC -Jebel Ali Refinery Expansion Project
- Noor Energy PV Hybrid Project, MBR Solar Park



**KCG Egypt, A-BUILD Egypt & SCC**



A-Build Egypt for Contracting, a proud affiliate of IKK, plays a prominent role in Egypt's construction sector. With the backing of IKK's extensive presence across 16 countries and a strategic alliance with United Holding Company (UHC), we provide high-quality services and exclusive solutions from both international and local manufacturers. Our experienced team of engineers and technicians is committed to delivering efficient and innovative solutions while upholding the highest standards of professionalism.

A-Build Egypt is also a market leader and specialized contractor in the following domains:

- Waterproofing
- Thermal Insulation
- Injection
- Protective Painting
- Fire stopping & Fireproofing
- Rubber Lining
- Mechanical & Cladding
- Protective Coating for Concrete
- Road Marking
- Epoxy Lining
- Anti-Carbonation Coating
- Screed
- Concrete Repair
- Strengthening
- Wind Grouting
- Expansion Joints
- Shotcrete Structural

SCC (Specialized Contracting Company) is an Egyptian joint venture between Kabbani and Marasem that intends to deliver our extensive list of specialized services exclusively to Marasem projects. The experience and partnerships of both organizations with many of the key providers in this industry, whether in product, machinery, or know-how, position them to deliver the greatest service to their customers.



# KCG

## Regional Presence

### KCG Oman

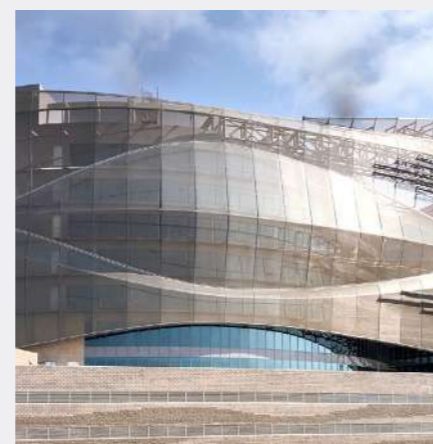


KCG Oman was founded in April 2010 as a branch of KCG Saudi Arabia to address the rising demand in the Oman market for quality specialized contractors in the field of construction protection.

KCG Oman has been growing steadily over the last few years and is well on its way to becoming a market leader in the waterproofing, concrete restoration, and floor coating sectors. This is due to the company's consistency in high-quality services, complete client satisfaction, and the Kabbani name and reputation.

KCG Oman is continually looking for high-quality projects with landmark status, such as the Muscat International Airport, Salalah International Airport, the National Bank of Oman, and the Wave Golf Course.

KCG Oman has completed a 3 million O.R. Terrazzo flooring and bridge deck waterproofing solution for the Muscat International Airport MC3 project.



### KCG Bahrain



KCG Bahrain offers a wide range of building and construction solutions in the Middle East. Established in 2009, KCG Bahrain has a proven record of accomplishments in diverse construction projects. The team is backed by the collective strength of KCG's specialized divisions, offering a comprehensive range of services such as:

- Roofing and Waterproofing
- Thermal Insulation
- Geosynthetic Lining Systems
- Structural Repair and Injection Leakage Treatment
- Maintenance Services
- Floorings and Protective Coatings

KCG Bahrain is committed to exceeding client expectations and prioritizing quality in every aspect of their work. They adhere to the highest international standards and have a dedicated team of skilled professionals who deliver projects on time. They believe in building strong partnerships with clients and contributing to the continued development of Bahrain's construction sector, adhering to sustainable practices and environmental responsibility.

KCG Bahrain's vast portfolio encompassing various project types and sizes makes it an ideal partner for clients seeking construction solutions in the region. KCG has executed several significant projects for ministries of works, housing, interior, and transportation with Bapco, Bahrain International Airport, EWA, etc.



## KCG

### Regional Presence

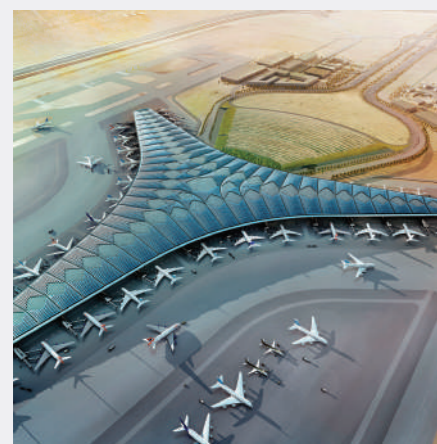
## KCG Kuwait



After first entering the market in 2014, KCG Kuwait was legally established in 2016 as a branch of KCG Saudi Arabia to participate in the growing demand of the Kuwait market as a specialized subcontractor in the construction industry. In a short period, KCG Kuwait, with KCG's impressive reputation, was able to win major high-profile iconic projects such as Kuwait International Terminal T2, Al Salaam Palace, Sabah Al Salem University, Warehouse Mall, International Tennis Complex, Ali Al Salem Air Base, Umm Al Hayman Waste Water Treatment, and the list goes on. KCG Kuwait is approved by KNPC, KOC, MPW, PAI, and the Kuwait Fire Force and registered with the Central Agency of Public Tenders.

Services offered by KCG Kuwait:

- Waterproofing
- Epoxy & Polyurethane Floor Coatings
- Epoxy Terrazzo
- Steel Fireproofing & Firestop
- Thermal Insulation
- Concrete Canvas
- Concrete Repairs
- Blasting & Painting
- Refractory Linings
- Rubber Lining
- Foam Concrete
- Expansion Joints
- Vinyl Flooring & Wall Cladding



## A-BUILD Lebanon




A-Build Lebanon Contracting & Trading Co. was established in Lebanon in 1993 in response to a growing concern about construction, safety, and environmental issues. Furthermore, our solutions have been carefully selected to meet today's growing demand for innovative engineering materials.

A-Build can confidently assure its customers of its premium-quality services in the supply and installation of:

- Waterproofing & Damp Proofing
- Concrete Repair & Protection
- Special Floor Coatings
- Lightweight Foam Concrete & Environmental Engineering (Ponds & Landfill Lining)

A-Build Lebanon is the distributor and approved applicator for several famous worldwide manufacturers and products, relying on a highly-skilled, specialized, and motivated staff of engineers, supervisors, and applicators.





We are proud to be a recognized contractor for some of the strategic and prestigious projects taking place in KSA that align with Saudi Vision 2030.

Picture: Amaala | KSA

## King Fahd University of Petroleum & Minerals (KFUPM)

**Project Owner:** King Fahd University of Petroleum and Minerals.  
**Location:** Dhahran, KSA.  
**Year of Completion:** 2018.  
**Scope of Work:** Turnkey Construction for 300 Villas, Building Conversion Research Center, Admission and Student Affairs Building, Building# 75, Central Warehouse Complex Including Fit-out & MEP. Landscape Development, Infrastructure Development, Enabling Works and Road Construction. Waterproofing and Membrane Roofing Systems for the Central Store Warehouse, 312 villas, and 2 multistorey Parking.  
**By Divisions:** KAC, EMCC, SPD, BMC.



## ARAMCO General Construction & Maintenance

**Project Owner:** ARAMCO.  
**Location:** Central, Western, Eastern Regions, KSA.  
**End Date:** Ongoing.  
**Scope of Work:** General contracting services for residential, medical, hospitality, and educational buildings. Facility Management & General Maintenance, including: Enabling Works & Road Construction, Fit-out, Protective Coating Systems, Structure Insulation Systems for Oil & Gas Facilities, Renovation Services, Concrete Repair & Civil Works, MEP, HVAC and related services, Installation of Security Systems, and Facilities Installation & Restoration.  
**By Divisions:** COSMA.



## Developmental Housing Program - Wave 3

- Project Owner:** National Housing Company.  
**Location:** Jeddah, Najran, Ahsa, Makkah, KSA.  
**End Date:** Ongoing.  
**Scope of Work:** Design & build for all disciplines. Testing, Commissioning, and handover for 1635 units with different models from one bedroom to four bedrooms distributed over eight regions in the KSA. Supply & installation of EIFS façade system.  
**By Divisions:** KAC, EMCC, BMC.



## Amazon Central Warehouse

- Project Owner:** Amazon  
**Location:** Jeddah, KSA.  
**End Date:** 2024.  
**Scope of Work:** System Design, Supply of Materials, System Installation, and Testing & Commissioning for Batteries, Battery Chargers, and an 1800 KWp Solar PV System.  
**By Divisions:** IKK Energy.



## Dammam Airport International Airport

**Project Owner:** DACO.  
**Location:** Dammam, KSA.  
**End Date:** 2018.  
**Scope of Work:** Concrete Paving Works.  
**By Divisions:** ACMS.



## Riyadh Metro Elevated Stations

**Project Owner:** Arriyadh Development Authority (ADA).  
**Location:** Riyadh, KSA.  
**End Date:** 2019.  
**Scope of Work:** Supply and Supervision of Post-Tensioning Cables and the Replacement of the Internal Lining of the Reservoir.  
**By Divisions:** KPT.



## Rehabilitation of One Million Tank Reservoir

- Project Owner:** The Saline Water Conversion Corporation (SWCC).  
**Location:** Makkah, KSA.  
**End Date:** Ongoing.  
**Scope of Work:** Structural Rehabilitation, Concrete Repair, 3D Laser Scanning and 3D Modeling for the existing condition of the tank. Replacement of the Existing Waterproofing System with a new EVA Liner System and Leak Detection System, with a total built-up area of 90,000 sq m and 30 m height, dam 460 m x 20 m.  
**By Divisions:** SPD, Structural Systems, BMC.



## Heritage Restoration for 70 historical buildings

- Project Owner:** Confidential.  
**Location:** KSA.  
**End Date:** 2025.  
**Scope of Work:** Restoration, Conservation, and Rehabilitation of 70 Buildings with a Total BUA of 15,120 m<sup>2</sup>. Scope of work including but not limited to Excavation & Backfilling Works, Civil & Strengthening for Reinforced Concrete (Slabs, Column, Foundation, Stairs, Beams), Fabrication, Re-fabrication, Procurement, Supply, and Installation for all Architecture Works, Elements, & Art.  
**By Divisions:** Structural Systems, HRC.



## Riyadh Metro - Line 3

**Project Owner:** Arriyadh Development Authority.  
**Location:** Riyadh, KSA.  
**End Date:** 2021.  
**Scope of Work:** MEP works for seven deep stations, including Low & Medium Voltage Networks, Substations, HVAC (Heating, Ventilation & Air Conditioning) Systems, and Tunnel Ventilation System.  
**By Divisions:** EMCC.



## King Abdulaziz International Airport

**Project Owner:** General Authority of Civil Aviation (GACA).  
**Location:** Jeddah, KSA.  
**End Date:** 2019.  
**Scope of Work:** Waterproofing & Thermal Insulation, Firestopping & Traffic Coating Works. Repair Work for Concrete Substrate, Car Park Coating System, Cement Fireproofing, Intumescent Fireproofing, Internal & External Protective Coating. Supply & Installation of Expansion Joint, Crack Injection Works. Internal Surface Preparation for Slabs & Floors, Concrete Leveling Works. Engineering, Supplying, Fabrication, and Erection of Steel Structures.  
**By Divisions:** SUW, CRES, Structural Systems, ACMS, FULAZ.



## New Headquarters for the Ministry of Energy

- Project Owner:** Ministry of Energy, Industry and Mineral Resources.  
**Location:** Riyadh, KSA.  
**End Date:** Ongoing.  
**Scope of Work:** Complete Fit-Out Works for Architectural, Electrical, Mechanical, Audio, and Video. Supply & Install The Complete Furniture for a 20-Story Tower With a Built-Up Area of 55,000 sq m.  
**By Divisions:** KAC, EMCC.



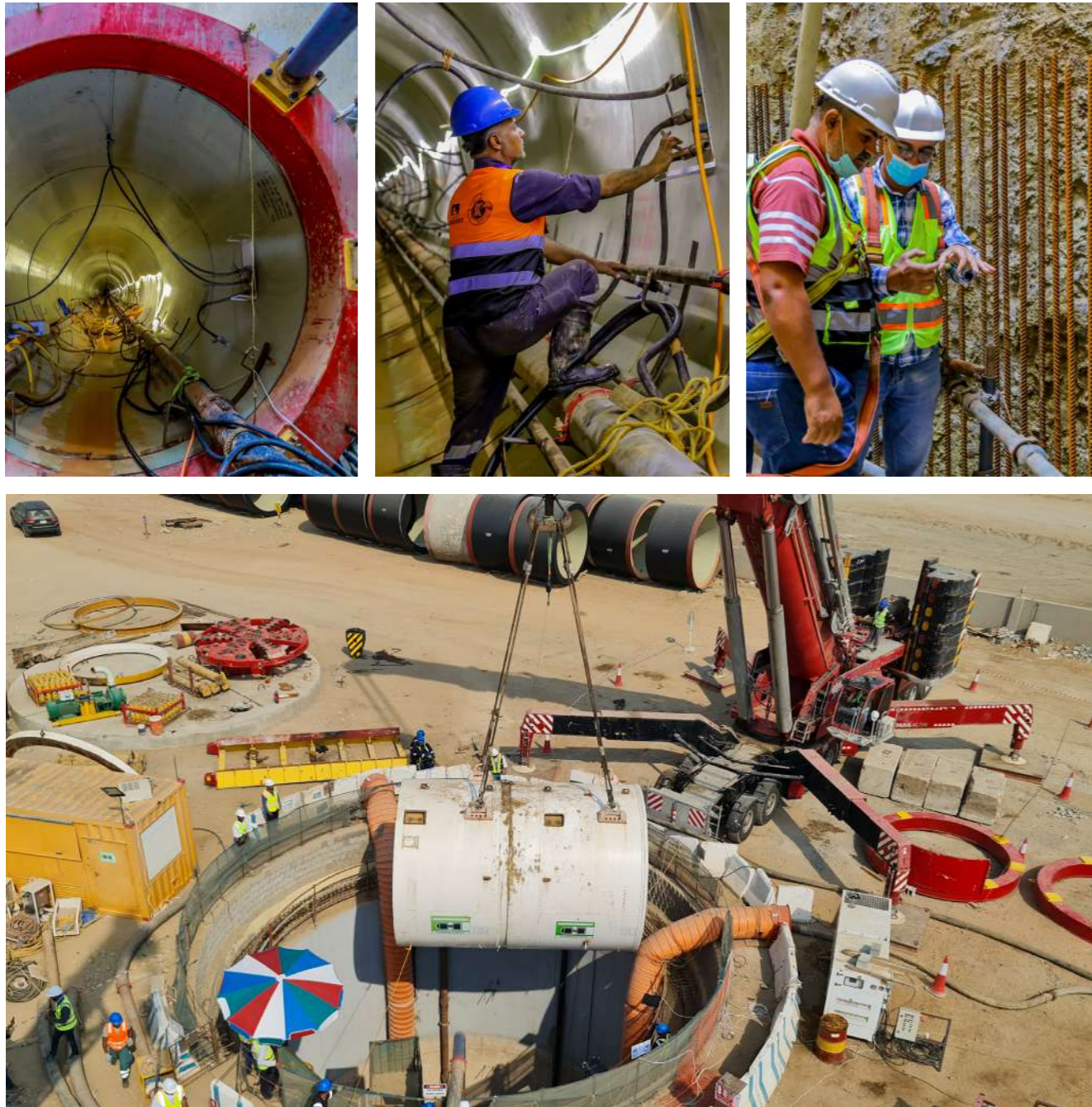
## New Headquarters for the Ministry of Transport

- Project Owner:** Ministry of Transport.  
**Location:** Riyadh, KSA.  
**End Date:** Ongoing.  
**Scope of Work:** Testing, Commissioning, and Handover for All Fit-Out Works and Interior Finishes. Supply & Installation of Furniture for The Whole Tower (Offices, Meeting Room, Workstation Area, Social Area, Lounge, Waiting Area, and Reception). 3D Laser Scanning and Modeling of The Existing Condition for All 28 Floors With a Total Built-Up Area of 25,000 sq m.  
**By Divisions:** KAC, BMC, EMCC.



## Construction of the NWC Water Tunnel

- Project Owner:** National Water Company (NWC).  
**Location:** Jeddah, KSA.  
**End Date:** 2023.  
**Scope of Work:** Microtunneling of The Main Tunnel Passing Under Al Haramain Train With a Diameter Of 3500 Mm, a Length Of 960 Lm, and a Depth of 55 M Underground.  
**By Divisions:** SPD and Concord jointly.



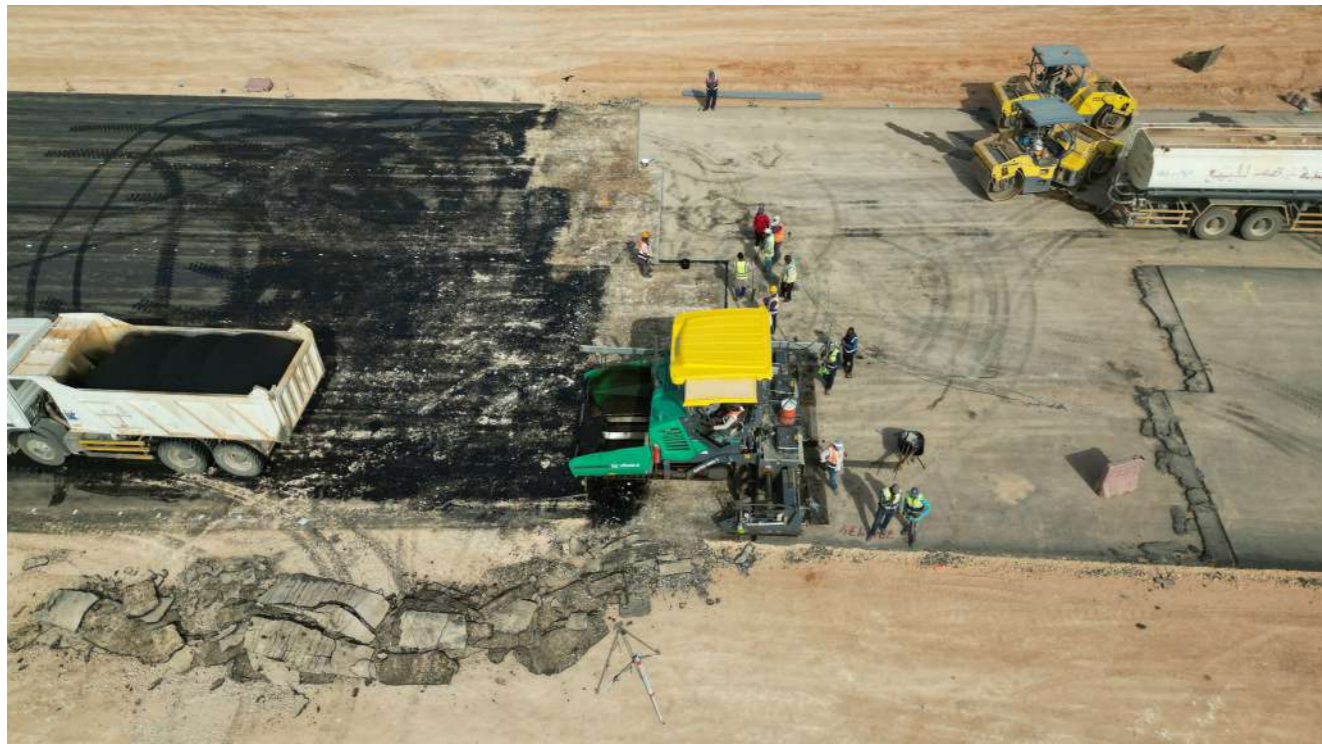
## SABIC General Construction & Maintenance Contract

- Project Owner:** ARAMCO.  
**Location:** Central, Western, & Eastern Regions, KSA.  
**End Date:** Ongoing.  
**Scope of Work:** General Contracting Works for Concrete Repair, Civil Works, Coating Works & Structural Strengthening. Replacement of Surge-On Headliners for a Cooling Tower. Repair Work and Construction of the Stormwater Ditches. Rehabilitation Services, Construct the Storm Water Drain, Repair Damaged Networks, Road Construction, Aluminum Cladding, Tank Sealant Repair, and Waterproofing.  
**By Divisions:** Cosma, ISD.



## King Salman Air Base (KSAB)

**Project Owner:** MODA.  
**Location:** Riyadh, KSA.  
**End Date:** Ongoing.  
**Scope of Work:** Civil Works, including 2,200,000 m<sup>3</sup> of Earthworks, 15,000 m<sup>3</sup> of Flexible & Rigid Pavement Works for Runways and Taxiways, 2000 LM Rains Drainage Network, 50,000 m<sup>2</sup> of Road, Runways, and Taxiways Signs Planning.  
**By Divisions:** SPD.



## Qassim Storm & Sewerage Network

**Project Owner:** Qassim Municipality.  
**Location:** Qassim, KSA.  
**End Date:** 2021.  
**Scope of Work:** Construction of a 15 Km Storm Water Network Pipeline in Addition to a 16 Km Culvert Box & Construction of 150 Km of Pipeline, Sewage Networks, Connections, and Its Lift Station.  
**By Divisions:** SPD, EMCC.



## Construction of AMAALA Airport Runway

**Project Owner:** AMAALA.  
**Location:** Al Wajh, KSA.  
**End Date:** 2022.  
**Scope of Work:** Construction & Enabling Work for Runways and Taxiways and Aprons.  
**By Divisions:** SPD.



## World Defense Show

**Project Owner:** Saudi Arabian Military Industries.  
**Location:** Riyadh, KSA.  
**End Date:** 2022.  
**Scope of Work:** Execution of Crushed Aggregate (Subbase + Base) Course & Asphalt Concrete (Base + Surface) Course for Runway Shoulder, Taxiway Shoulder, Blast Pad & ARFF, Taxiways & Apron.  
**By Divisions:** SPD.



## Precast Villas for The Ministry of Health (MOH)

**Project Owner:** Ministry of Health.  
**Location:** Al Ahsa, KSA  
**End Date:** 2022.  
**Scope of Work:** The Supply, Delivery, and Erection (with Cranes) of the Precast Element and Prestressed Hollow-Core Slab.  
**By Divisions:** INSHAA.



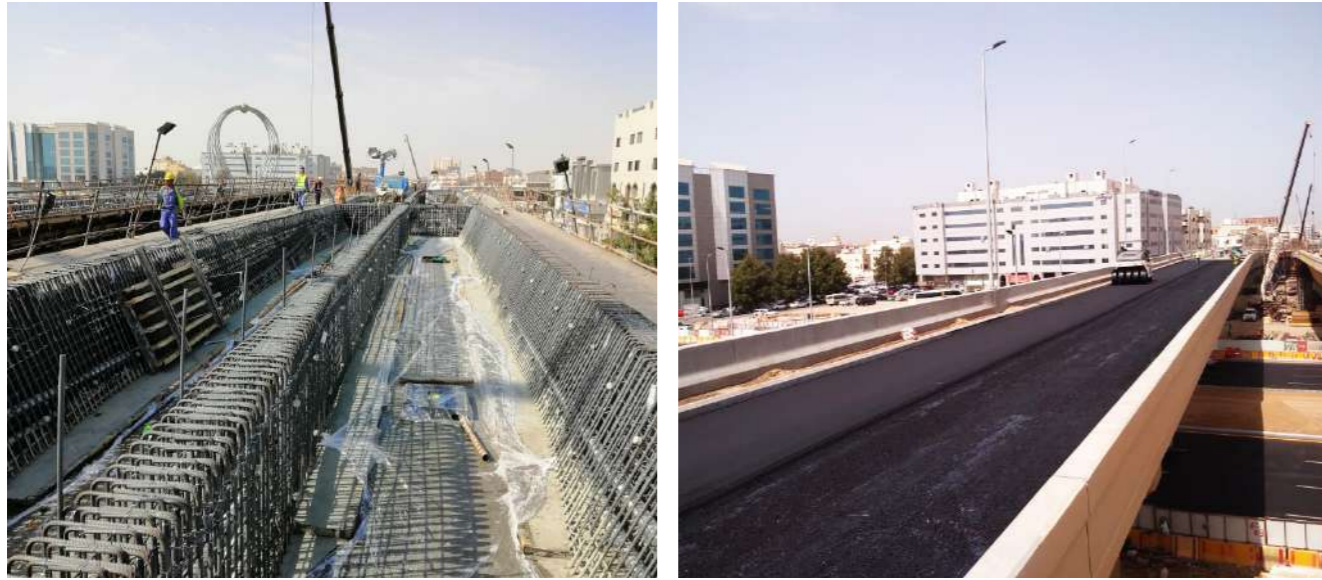
## Al-Khafji Joint Operations (KJO)

**Project Owner:** Aramco Gulf Operations Company Limited ("AGOC") and Kuwait Gulf Oil Company Ltd.  
**Location:** Al-Khafji, KSA.  
**End Date:** 15-year agreement ends in 2036.  
**Scope of Work:** Oil and Gas Exploration, Development, and Production in the Offshore Area. Supervision, Manpower, Materials, and Equipment for Blasting & Painting Activity, Including Scaffolding to Repair the Platforms in the Offshore Area.  
**By Divisions:** CRES.



## KARWEST

**Project Owner:** ADA.  
**Location:** Jeddah, KSA.  
**End Date:** 2016.  
**Scope of Work:** Supply and Installation of Post-Tensioning Works of 2 Flyovers (850 Tons PT Strands), 2 Main Bridges, and 1 Girders Bridge.  
**By Divisions:** KPT.



## Avenues Riyadh

**Project Owner:** Shomoul.  
**Location:** Riyadh, KSA.  
**End Date:** Ongoing.  
**Scope of Work:** Supply and Supervision for 218,000 sq m of Post-Tensioning Slabs.  
**By Divisions:** KPT.



## 3D Concrete Printed Villa (Ground & First Floors)

- Project Owner:** Private.
- Location:** Dubai, UAE.
- End Date:** 2025.
- Scope of Work:** Full turnkey execution of a two-story villa using advanced 3D Concrete Printing (3DCP) technology. Complete design, engineering, and authority approvals; site preparation and civil works; 3D printing of all vertical structural and architectural components; conventional roof and slab works; MEP installations; interior and exterior finishing; and landscaping. The villa will be delivered fully constructed, commissioned, and ready for occupancy, with all works executed to meet international standards.
- By Divisions:** Inspectech.



## Holy Haram's 10-Km Underground Utility Culvert

- Project Owner:** The General Presidency for the Affairs of the Two Holy Mosques (GPH).
- Location:** Makkah, KSA.
- End Date:** 2013.
- Scope of Work:** Structural Condition Assessment, Development of As-Built Drawings, Asset Management, Visual Inspection, Non-Destructive Testing, Material Sampling & Testing, Rectification Works Recommendation, Supply & Apply the Asset Management System of the Underground Utility Culvert, In Addition To Rehabilitation and Maintenance for the 10-Km Utility Tunnels, Structural Assessment, Concrete Repair, and Electromechanical Work.
- By Divisions:** Inspectech, Structural Systems, EMCC.



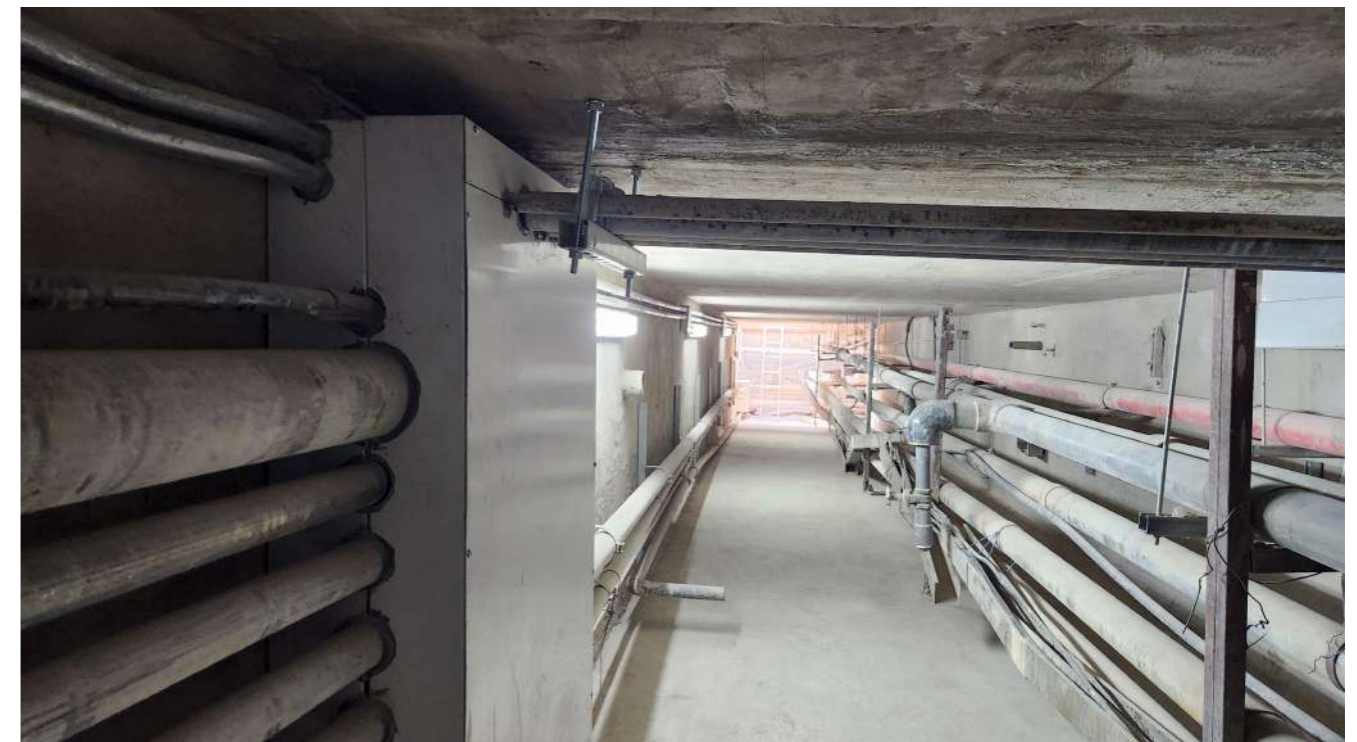
## King Abdulaziz Center for World Culture

**Project Owner:** ARAMCO.  
**Location:** Dhahran, KSA.  
**End Date:** 2018.  
**Scope of Work:** Supply, Installation, and Testing of a High-Efficiency and Watertight Roof Garden System Utilizing Thermoplastic Membranes for a 35,000 sq m Area. The Roofing System Was Equipped with a State-of-the-Art Leak Detection System to Ensure Ultimate Watertightness.  
**By Divisions:** BMC.



## Concrete Structure Rehabilitation of KFUPM Services Tunnel

**Project Owner:** King Fahad University of Petroleum and Minerals  
**Location:** Dhahran, KSA.  
**End Date:** 2023.  
**Scope of Work:** Structural Rehabilitation for a 1.3 Km Service/Utility Tunnel: Slab Jacketing, Wall Reskinning, Crack Injection, and Installation of Corrosion Inhibitors Inside the Concrete Structure of the Service Tunnel. Using BIM standards, including 2D and 3D documentation for the as-existing and as-built conditions, provided by Advanced 3D Laser Scanning Solutions for reality capture.  
**By Divisions:** Structural Systems.



## King Khaled Bridge

**Project Owner:** Ministry of Transport.  
**Location:** Riyadh, KSA.  
**End Date:** 2015.  
**Scope of Work:** Visual Inspection, Non-Destructive Testing, Material Sampling & Testing, Structural Analysis, Rectification Works Recommendation, Structural Strengthening Design, and Quality Assurance Bridge Load Testing.  
**By Divisions:** Inspectech.



## Saudi Aramco's Offshore Maintain Potential Program

**Project Owner:** Saudi Aramco.  
**Location:** Eastern Region, KSA.  
**End Date:** On going.  
**Scope of Work:** Non-Destructive Testing, Heat Treatment and Inspection Services.  
**By Divisions:** SOGEC.



## Petroleum Conversion Research Center (PCRC)

**Project Owner:** KFUPM - Dhahran Techno Valley - ARAMCO  
**Location:** Dhahran, KSA.  
**End Date:** 2025.  
**Scope of Work:** Design, Build, Procurement, and Testing, Commissioning, and Handover for Construction of the Petroleum Research Center for King Fahd University of Petroleum and Minerals (KFUPM), including Internal & External Works (Structural, Architectural, Mechanical, HVAC, and Electrical works) with a total built-up area of 7600 m<sup>2</sup>.  
**By Divisions:** KAC, EMCC, BMC.



## SICM Dammam Crude & Gas Development Project

**Project Owner:** Saudi Aramco.  
**Location:** Dammam, KSA.  
**End Date:** Ongoing.  
**Scope of Work:** Non-Destructive Testing and Inspection Services for the Onshore Pipeline.  
**By Divisions:** SOGEC.



## Structural Rehabilitation & Maintenance of Bridges and Tunnel

**Project Owner:** Jeddah Municipality  
**Location:** Jeddah, KSA.  
**End Date:** Ongoing.  
**Scope of Work:** Structural Rehabilitation & Maintenance for 47 bridges and 18 tunnels.  
**By Divisions:** Structural Systems.



## King Faisal University General Construction Works

**Project Owner:** King Faisal University.  
**Location:** Al Ahsa, KSA.  
**End Date:** 2018.  
**Scope of Work:** Construction of Girls Academic Building That includes Interior Design, Supply and Apply of Office Furniture, Electrical Works and Construction of Girls Academic Building.  
**By Divisions:** KAC.



## Renovation of VIP & Royal Terminals in 14 Domestic Airports

**Project Owner:** General Authority of Civil Aviation  
**Location:** KSA.  
**End Date:** 2017.  
**Scope of Work:** Renovation and Development of 14 KSA Airports, Including Royal and VIP Lounges, Departure and Check-In And Arrivals Halls, Construction of Explosives Detection, Removal, and Neutralization Buildings, and Renovation and Development of Fire and Rescue Buildings.  
**By Divisions:** KAC, EMCC, BMC, CRES.



## AL Shaya Warehouse

**Project Owner:** Al Shaya Holding.  
**Location:** Riyadh, Saudi Arabia.  
**End Date:** 2023.  
**Scope of Work:** Design, Supply, and Installation of Twintec Freeplan® Internal Ground Bearing Floor Slab With a Total Area Of 53,013 m<sup>2</sup>. The Floor Thickness Is 320 mm, 280 mm, & 170 mm.  
**By Divisions:** Twintec.



## Masar Destination Residential & Commercial Towers

**Project Owner:** Um Al Qura for Development and Construction  
**Location:** Makkah, KSA.  
**End Date:** Ongoing.  
**Scope of Work:** Design, supply, and installation of soldier pile shoring systems (39,000 m<sup>2</sup>), secant and contiguous piles (500 lm), rock nails (26,000 lm), and excavation works (190,000 m<sup>3</sup>), in addition to applying a fully bonded sub-structure waterproofing system (580,000 m<sup>2</sup>) and PVC roofing with tapered insulation (8,000 m<sup>2</sup>). Also the installation of 20,000 m<sup>2</sup> of fireboard, 180,000 m<sup>2</sup> of traffic coating, and 36,000 m<sup>2</sup> of anti-carbonation coatings. These works span across Masar Mall, Masar Residential & Commercial Towers, and Generator Rooms, contributing to the structural, protective, and functional performance of the development, supporting religious, social, and commercial needs.


**By Divisions:** BMC, KFS, CRES.



## Six Flags Theme Park Project

**Project Owner:** Six Flags Qiddiya City.  
**Location:** Qiddiya, KSA.  
**End Date:** Ongoing.  
**Scope of Work:** Project includes the execution of artificial rock works over an area of 70,000 m<sup>2</sup>, 105,000 m<sup>2</sup> of intumescent and cementitious fireproofing works. The scope also includes the application of 12,000 m<sup>2</sup> of Exterior Insulation and Finishing System (EIFS), as well as 48,000 m<sup>2</sup> of sub-structure waterproofing and waterproofing treatment for 570 foundation piles at the adjacent Qiddiya Water Theme Park.  
**By Divisions:** CRES, BMC.



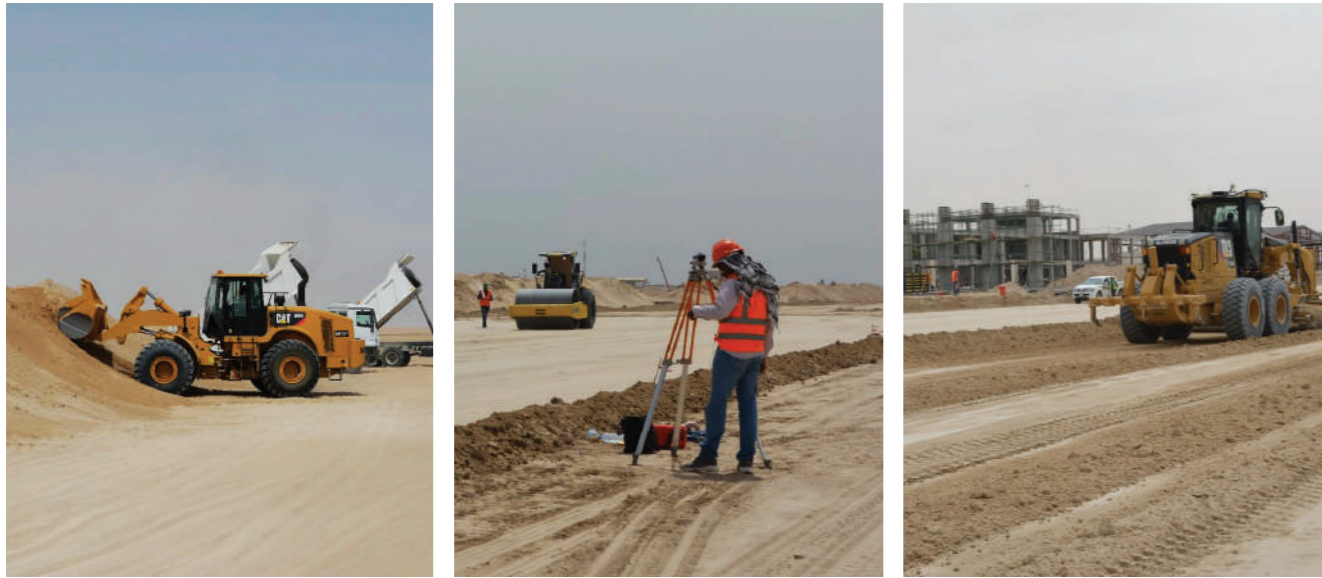


KCG's specialized construction legacy shapes the KSA and MENA landscapes. We tackle the most complex projects, earning our leading position as the Middle East's trusted partner for innovation.

Picture: Louvre Museum Abu Dhabi | UAE

## Ali Al Salem Air Force Base

**Project Owner:** Leonardo Aircraft.  
**Location:** Kuwait.  
**End Date:** 2020.  
**Scope of Work:** Excavation Works, Backfilling Works, Concrete Paving for Aprons and Asphalt for Taxiways.  
**By Divisions:** SPD.



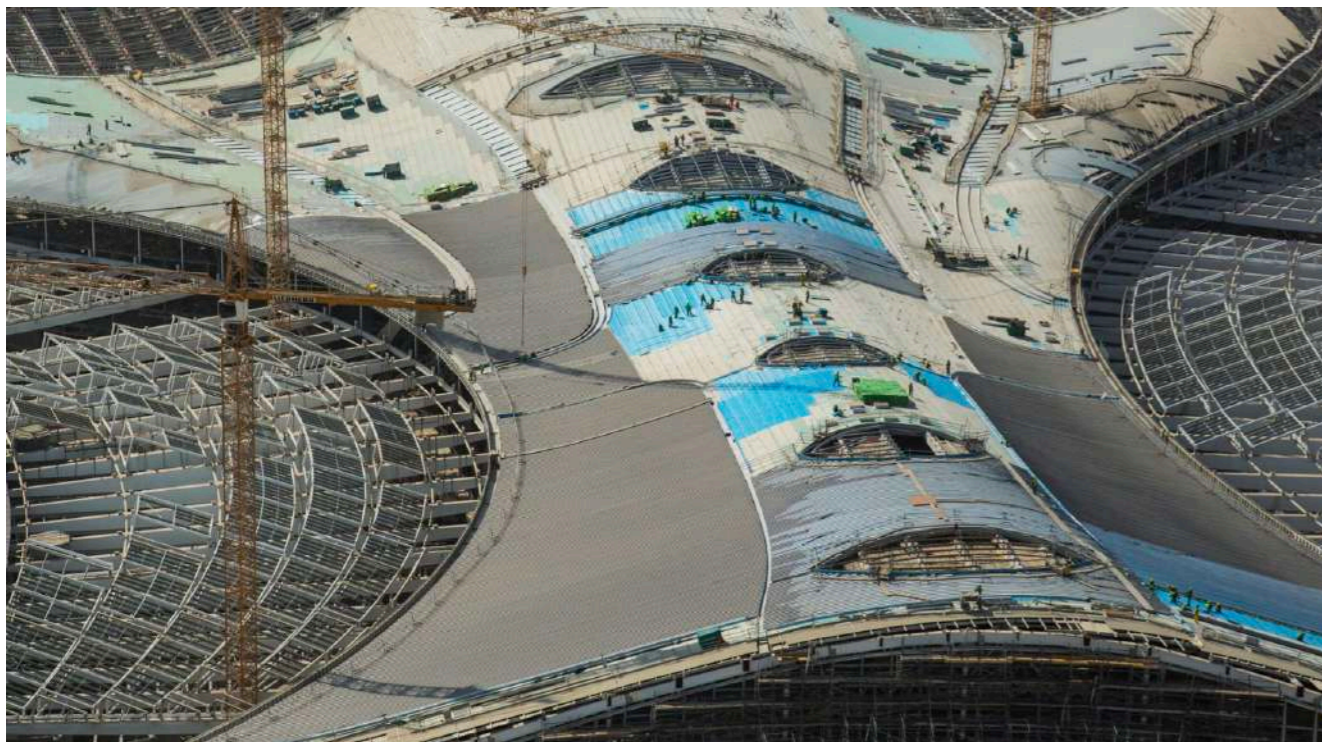
## Louvre Abu Dhabi Museum

**Project Owner:** Abu Dhabi Department of Culture & Tourism.  
**Location:** Abu Dhabi, UAE.  
**End Date:** 2016.  
**Scope of Work:** Waterproofing for Deep Foundations Submerged in the Sea With Full-Project Waterproofing Solutions From the Basement to the Roof.  
**By Divisions:** KCG Emirates.



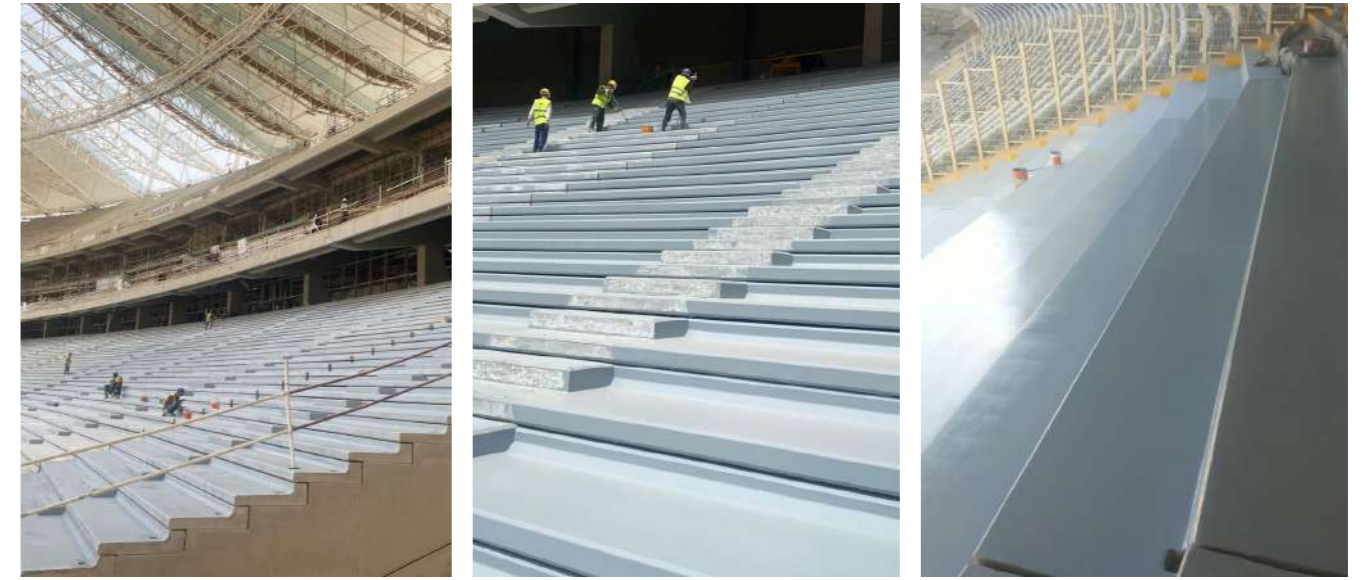
## Abu Dhabi International Airport

**Project Owner:** Abu Dhabi Airports Company.  
**Location:** Abu Dhabi, UAE.  
**End Date:** 2018.  
**Scope of Work:** Waterproofing Works & Polyurethane Car Park Floor Coating Works.  
**By Divisions:** KCG Emirates.



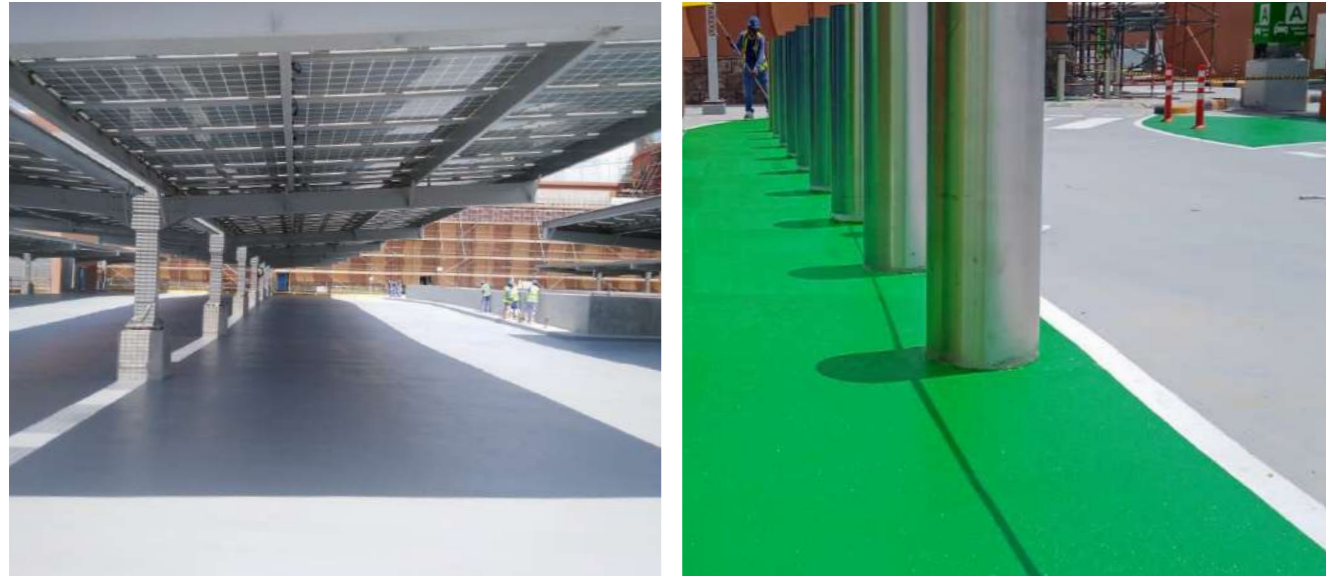
## The Egyptian Army Stadium at the New Administrative Capital

**Project Owner:** Government.  
**Location:** New Capital, Egypt.  
**End Date:** 2024.  
**Scope of Work:** Supply & Application of Epoxy & Polyurethane Coatings for Car Parks, Ramps, and Bleachers. Supply and Application of Waterproofing Work for Underground, Tank, and Wet Areas.  
**By Divisions:** A-Build Egypt.



## Mall of Oman

**Project Owner:** Majid Al Futtaim.  
**Location:** Muscat, Oman.  
**End Date:** 2021.  
**Scope of Work:** Parking Works for an Area of 60,000 sq m, and Anti-Carbonation Painting Works for an Area of 230,000 sq m.  
**By Divisions:** KCG Oman.



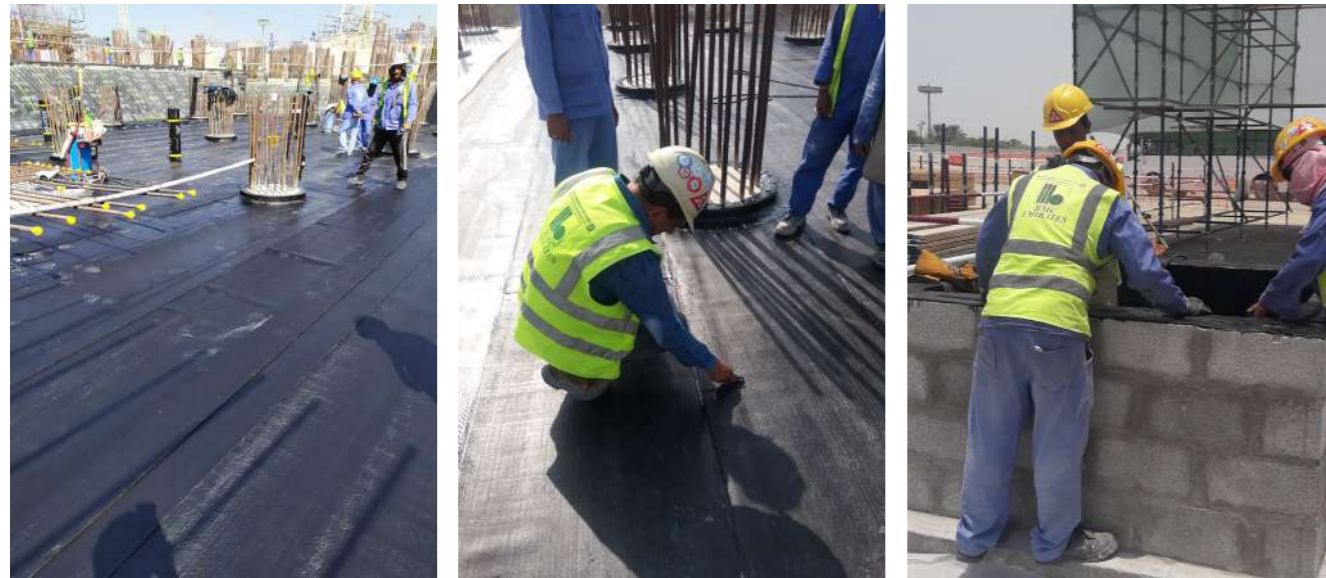
## Zayed National Museum

**Project Owner:** The Tourist Development and Investment Company of Abu Dhabi (TDIC).  
**Location:** Abu Dhabi, UAE.  
**End Date:** Ongoing.  
**Scope of Work:** Installation of Substructure Waterproofing Consisting of a PVC System With a Total Area of 5800 sq m and a Spray-Applied Polyurea Membrane System With a Total Area of 24,431 sq m.  
**By Divisions:** KCG Emirates.



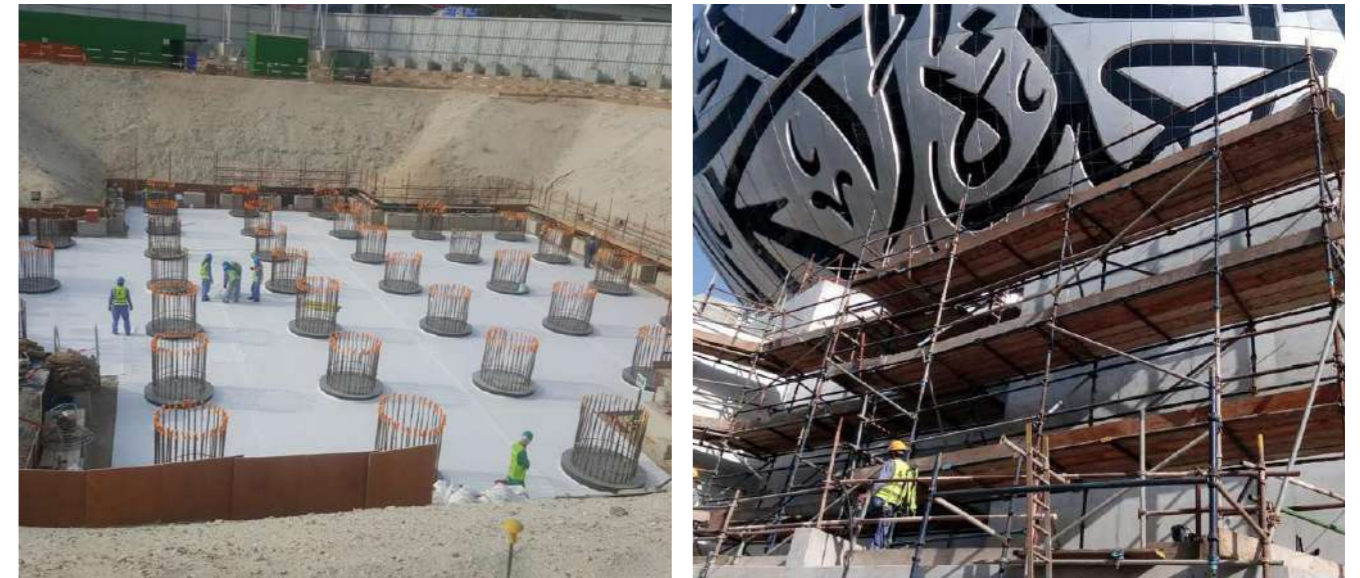
## SeaWorld Abu Dhabi

- Project Owner:** Miral Asset Management .
- Location:** Abu Dhabi, UAE.
- End Date:** 2021.
- Scope of Work:** Installation of Substructure Waterproofing Comprising an SBS System With a Total Area of 158,196 sq m and the Application of Rubberized Bituminous Waterproofing Emulsion on Grade Slab With a Total Area of 21,000 Sq m. In Addition to Pile Head Treatment, Treatment of Construction Joints in Aquatic Tanks With Injection Hose, Swell Able Bars, and Re-Injectable Grout With a Total of 34,126 lm.
- By Divisions:** KCG Emirates.



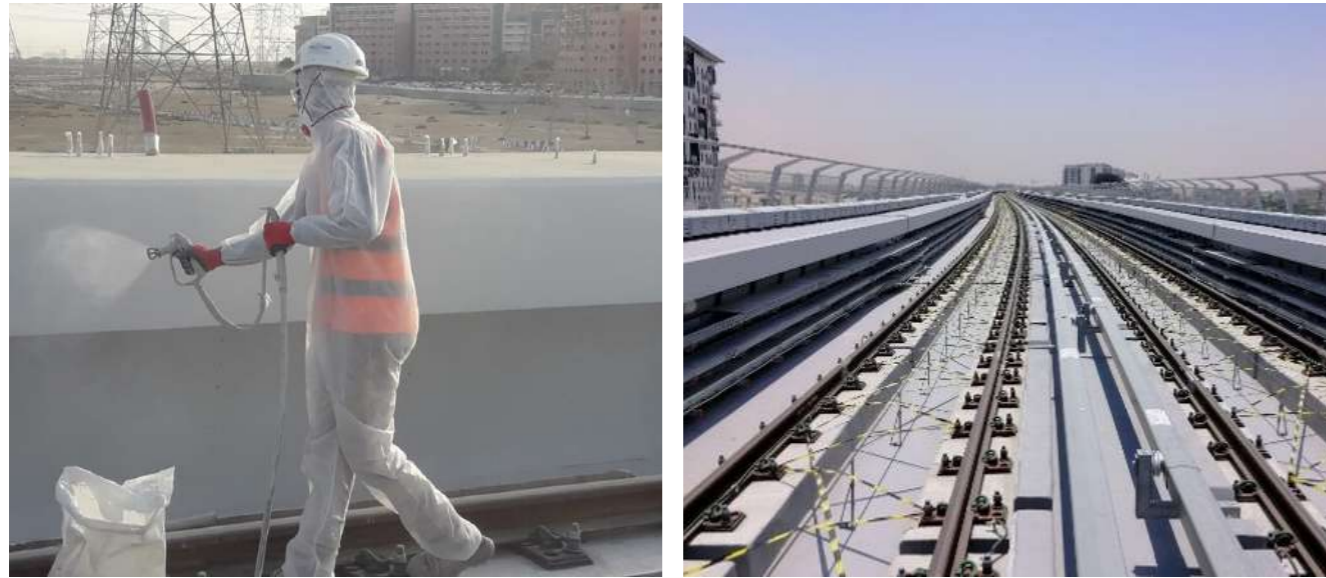
## Museum of The Future

- Project Owner:** The Tourist Development and Investment Company of Abu Dhabi (TDIC).
- Location:** Abu Dhabi, UAE.
- End Date:** 2021.
- Scope of Work:** Installation of Substructure Waterproofing Comprising of PVC System With a Total Area of 14,500 sq m. Installation of a Polyurea Membrane System With a Total Area of 18,025 sq m on the Podium and a Polyurethane System for Wet Areas With a Total Area of 1,370 sq m.
- By Divisions:** KCG Emirates.



## Dubai Expo 2020 Metro Route

- Project Owner:** Roads and Transport Authority (RTA).  
**Location:** Dubai, UAE.  
**End Date:** 2020.  
**Scope of Work:** Anti-Carbonation Protective Coating in Piers, Spans, Beams, and the Inner Cell Box & Parapet, With a Total Area of 162,880 sq m. Epoxy-Liquid-Applied Waterproofing Membrane at the Top of the Span of a Metro Track, Covering a Total Area of 50,220 Sq m.  
**By Divisions:** KCG Emirates.



## Infinity Bridge Dubai

- Project Owner:** Roads and Transport Authority (RTA).  
**Location:** Dubai, UAE.  
**End Date:** Ongoing.  
**Scope of Work:** Application of Anti-Carbonation Protective Coating in Piers, Spans, Beams, Inner Cell Box, and Parapet With a Total Area of 228,455 sq m.  
**By Divisions:** KCG Emirates.



## R5 Settlement - New Administrative Capital in Egypt

- Project Owner:** Egypt's Ministry of Housing (Utilities & Urban Development).  
**Location:** New Administration Capital, Egypt.  
**End Date:** Ongoing.  
**Scope of Work:** Supply and Supervision of 2 Million Square Meters of Post-Tensioning Slabs. Post-Tensioning Works for Concrete Slabs of {28} Clusters & Towers in the R5 Project, With BUA of 1,700,000 m<sup>2</sup> of PT Slabs, One of the Biggest Zones in R5 Project.  
**By Divisions:** SCC.



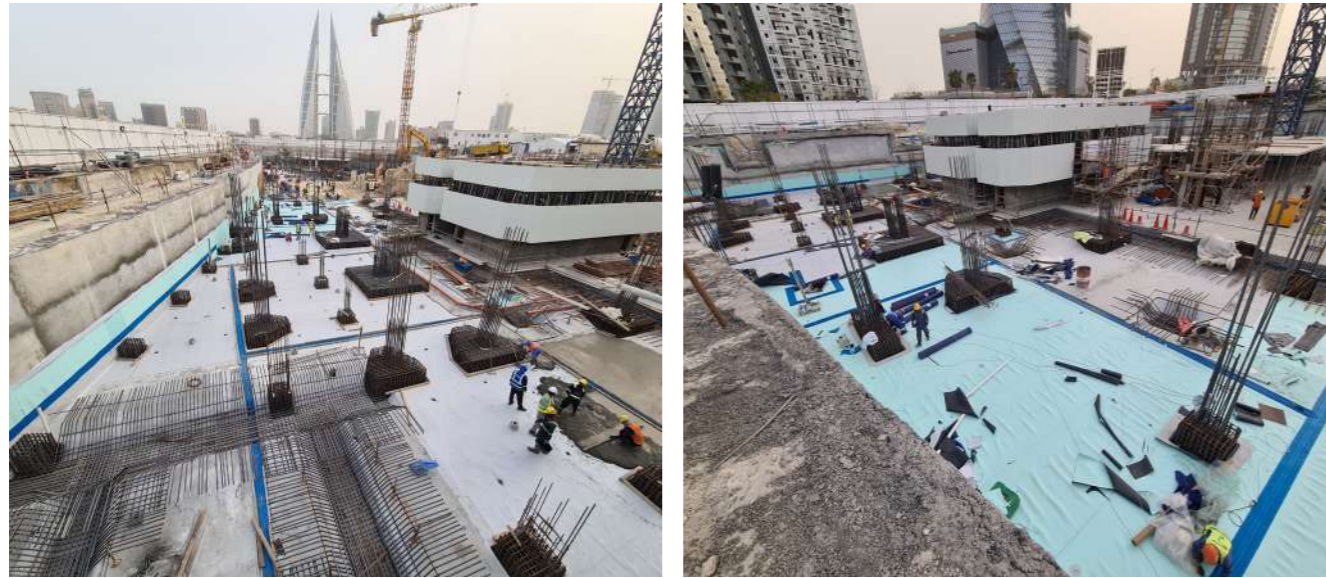
## Six Senses – The Palm, Dubai, UAE

- Project Owner:** Innovo.  
**Location:** Dubai, UAE.  
**End Date:** 2024.  
**Scope of Work:** The scope of work includes, but is not limited to, design to the Extent Required in the Specification, Engineering, Supply, Delivery to Site, Installation, Testing, Commissioning, Handover, Warranty, and Remedying of Defects Therein of Insulation & Finishes System (EIFS) and Multicoat Render System.  
**By Divisions:** KCG Emirates.



## Four Seasons Hotel Bahrain Bay

**Project Owner:** Bareeq Al Retaj.  
**Location:** Bahrain Bay.  
**Scope of Work:** Supply And Installation of Substructure PVC Compartment System.  
**By Divisions:** KCG Bahrain.



## King Abdullah Bin Abdulaziz Medical City (KAMC)

**Project Owner:** Arabian Gulf University.  
**Location:** Manama, Bahrain.  
**Scope of Work:** Supply and Installation of PVC Waterproofing System (Substructure, Roof, Wet Areas, and Planter Boxes).  
**By Divisions:** KCG Bahrain.



## Our

## Contacts

---

### Regional Offices

#### KCG Emirates

📍 Saih Shuaib 3 ,4 R/A Dubai Industrial City, opposite DEWA substation.

✉️ P.O.Box 282751 Dubai – UAE.

☎️ + 971 4 818 1987

📠 +971 4 429 7031

#### KCG Egypt & A-Build Egypt

📍 20 Moustafa Refaat Street, Sheraton, Cairo, Egypt.

✉️ P.O.Box 11799 Cairo-Egypt.

☎️ +2 (02) 21262798

📠 +2 (02) 21262798

#### A-Build Lebanon

📍 Tallet Al Khayat, Najjar Street, Panorama Building, Ground Floor.

✉️ P.O.Box 13-6031 Beirut-Lebanon.

☎️ +961 1 704 907 / +961 1 704908 / +961 3 377344

📠 +961 1 704 909

#### KCG Oman

📍 Ali Al Mahrouqi Building Flat No 403, Building No.176, Plot No. 511, Block No. 250, Ghala Bowsher.

✉️ P.O. Box 1759, PC # 133 Muscat, Oman.

☎️ +968 2 411 7545 / 46

📠 +968 2 411 7547

#### KCG Bahrain

📍 Road 3649, Block 436, Flat No. 11, Building 2748, Alseef Dist, Bahrain Kingdom

✉️ P.O Box 5106 – Alseef Dist, Bahrain Kingdom.

☎️ +973 1 725 2163

📠 +973 1 725 2148

#### KCG Kuwait

📍 Kuwait, Sharq, Block No. 3, Ibn Mesbah Street, Ahmed Tower, Floor No, 4.

✉️ P.O BOX : 13009.

☎️ +965 22 020 218

📠 +965 22 020 219

### KSA Offices

#### KCG Western Region

✉️ P.O. Box 5338, Jeddah 21422 KSA.

☎️ +966 12 627 8444

📠 +966 12 62 78333

#### KCG Central Region

✉️ P.O. Box 58951, Riyadh 11515 KSA.

☎️ +966 11 292 8444

📠 +966 11 292 8111

#### KCG Eastern Region

✉️ P.O. Box 6897, Dammam 31452 KSA.

☎️ +966 13 892 3444

📠 +966 13 859 0289

#### KCG Northern Region

✉️ P.O. Box 15313, Tabuk 47911 KSA.

☎️ +966 14 512 0222

📠 +966 14 512 0221

**For inquires** please contact us at

[kcg.enq@ikkgroup.com](mailto:kcg.enq@ikkgroup.com)

**Kabbani Construction Group**  
[www.kcg-ikk.com](http://www.kcg-ikk.com)

